



**RANCHO SANTA FE FIRE PROTECTION DISTRICT  
BOARD OF DIRECTORS MEETING  
AGENDA**

Rancho Santa Fe FPD  
Board Room – 18027 Calle Ambiente  
Rancho Santa Fe, California 92067

April 13, 2022  
1:00 pm PT  
Regular Meeting

**THIS BOARD OF DIRECTORS MEETING WILL BE CONDUCTED VIA TELECONFERENCE**

Pursuant to Governor Newsom’s [Executive Orders N-25-30](#), issued on March 12, 2020 and [N-33-20](#) issued on March 19, 2020: members of the Rancho Santa Fe Fire Protection District Board of Directors and staff may participate in this meeting via teleconference. In the interest of reducing the spread of COVID 19, members of the public are encouraged, but not required, to submit comments via email. Those attending the meeting in person will be required to maintain appropriate social distancing.

Public Comment: to submit a comment in writing, please email [caccavo@rsf-fire.org](mailto:caccavo@rsf-fire.org) and write “Public Comment” in the subject line. In the body of the email include the item number and/or title of the item as well as your comments. If you would like the comment to be read out loud at the meeting (not to exceed five minutes), please write “Read Out Loud at Meeting” at the top of the email. All comments received by 11:00 am will be emailed to the Board of Directors and included as “Supplemental Information” on the District’s website prior to the meeting. Any comments received after 11:00 am will be added to the record and shared with the members of the Board at the meeting.

Americans with Disabilities Act: If you need special assistance to participate in this meeting, please contact the Board Clerk 858-756-5971 ext. 1014. Notification 48 hours prior to the meeting will enable the District to make reasonable arrangements to assure accessibility to the meeting.

Rules for Addressing Board of Directors: Members of the audience who wish to address the Board of Directors are requested to complete a form near the entrance of the meeting room and submit it to the Board Clerk. Any person may address the Board on any item of Board business or Board concern. The Board cannot take action on any matter presented during Public Comment, but can refer it to staff for review and possible discussion at a future meeting. As permitted by State Law, the Board may take action on matters of an urgent nature or which require immediate attention. The maximum time allotted for each presentation is FIVE (5) MINUTES.

Agendas: Agenda packets are available for public inspection 72 hours prior to scheduled meetings at the Manager of Finance and Administration’s office located at 18027 Calle Ambiente, Suite 101, Rancho Santa Fe, CA during normal business hours.

Packet documents are also posted online at [www.rsf-fire.org](http://www.rsf-fire.org).



# Rancho Santa Fe Fire Protection District Board of Directors Regular Meeting

April 13, 2022

Call to Order

Pledge of Allegiance

Roll Call

1. Motion waiving reading in full of all Resolutions/Ordinances

All items listed on the Consent Calendar are considered routine and will be enacted by one motion without discussion unless Board Members, Staff or the public requests removal of an item for separate discussion and action. The Board of Directors has the option of considering items removed from the Consent Calendar immediately or under Unfinished Business.

2. Consent Calendar

a. Board of Directors Minutes

- Board of Directors minutes of March 16, 2022

ACTION REQUESTED: **Approve**

b. Receive and File

- Monthly/Quarterly Reports

(1) List of Demands Check 34834 thru 34932, Electronic File Transfers (EFT), and Wire Transfer(s) for the period March 2022 totaling:	\$ 253,864.37
Wire Transfer(s) period March 2022	\$ 1,286,444.86
Payroll for the period March 2022	\$ <u>615,441.44</u>
<b>TOTAL DISTRIBUTION</b>	<b>\$2,155,750.67</b>

- (2) Grant Recap – *no changes*
- (3) Activity Reports – April 2022
  - (a) Operations
  - (b) Training
  - (c) Fire Prevention

ACTION REQUESTED: **Receive and File**

c. Resolution No. 2022-12

To adopt by consent Resolution No. 2022-12 – *entitled* A Resolution of the Board of Directors of the Rancho Santa Fe Fire Protection District Proclaiming A Local Emergency Persists, Re-Ratifying The Proclamation of a State Of Emergency by Governor Newsom’s Executive Orders N-25-30, Issued March 12, 2020; N-33-20 Issued March 19, 2020, and Re-Authorizing Remote Teleconference Meetings Of The Legislative Bodies of Rancho Santa Fe Fire Protection District for the Period April 13, 2022 through May 12, 2022 Pursuant to Brown Act Provisions

ACTION REQUESTED: **Adopt**



# Rancho Santa Fe Fire Protection District Board of Directors

## Regular Meeting

April 13, 2022

3. Public Comment
4. Old Business
  - a. Apparatus Replacement Plan  
To update the board on the timetable and cost estimate for future capital replacement of the Type 6 apparatus for Station 6 needs. [Staff Report 22-02](#)  
ACTION REQUESTED: **Approve and Authorize**
5. New Business
  - a. Board of Directors Meeting Calendar  
To discuss conflicts with upcoming meeting dates.  
ACTION REQUESTED: **Confirm Dates**
  - b. Sale of Surplus Equipment #0461 - [Staff Report 22-03](#)  
ACTION REQUESTED: **Approve**
6. Resolution/Ordinance
7. Oral Report
  - a. Fire Chief
  - b. Operations – Deputy Chief
  - c. Training – Battalion Chief
  - d. Fire Prevention – Fire Marshal
  - e. Manager, Finance & Administration
  - f. Board of Directors
    - I. North County Dispatch JPA – Update
    - II. County Service Area – 17 – Update
    - III. Comments
8. Closed Session (**Time Certain – 2:00pm**)
  - a. Potential Litigation (1) Case – CONFERENCE WITH LEGAL COUNSEL – ANTICIPATED LITIGATION  
Significant exposure to litigation pursuant to subdivision (b) of Section 54956.9: *one potential (1) case*
9. Adjournment  
The next regular meeting Board of Directors meeting to be May 18, 2022 in the Board Room located at 18027 Calle Ambiente, Rancho Santa Fe, California. The business meeting will commence at 1:00 p.m.



# Rancho Santa Fe Fire Protection District Board of Directors Regular Meeting

April 13, 2022

---

---

## CERTIFICATION OF POSTING

I certify that on April 8, 2022 a copy of the foregoing agenda was posted on the District's website and near the meeting place of the Board of Directors of Rancho Santa Fe Fire Protection District, said time being at least 72 hours in advance of the meeting of the Board of Directors (Government Code Section 54954.2)

Executed at Rancho Santa Fe, California on April 8, 2022:

A handwritten signature in blue ink, appearing to read "Alicea Caccavo", is written over a horizontal line.

Alicea Caccavo  
Board Clerk

# Rancho Santa Fe Fire Protection District

## Regular Board of Directors Meeting

### Minutes March 16, 2022



*These minutes reflect the order in which items appeared on the meeting agenda and do not necessarily reflect the order in which items were considered.*

President Ashcraft called to order the regular session of the Rancho Santa Fe Fire Protection District Board of Directors at 1:00 pm at Station 4, 18040 Calle Ambiente, Rancho Santa Fe, CA 92067.

#### ***Pledge of Allegiance***

Chief Slattery led the assembly in the Pledge of Allegiance.

#### ***Invocation***

Chaplain Dwight Vallely led the invocation.

#### **Roll Call**

Directors Present: Ashcraft, Malin, Stine, Tanner

Staff Present: Fire Chief Dave McQuead; Deputy Chief Brian Slattery; Battalion Chief Luke Bennett; Battalion Chief Cole Thompson; Fire Marshal Marlene Donner; and Manager, Finance & Administration/Board Clerk Alicea Caccavo

#### 1. Special Presentation

##### a. **Badge Presentations**

##### **Promotions**

- ❖ Dave McQuead, Fire Chief (*December 16, 2021*)
- ❖ Brian Slattery, Deputy Chief (*January 1, 2022*)
- ❖ Luke Bennett, Battalion Chief (*June 1, 2021*)
- ❖ Cole Thompson, Battalion Chief (*July 16, 2021*)
- ❖ Tanner Worley, Captain (*January 1, 2020*)
- ❖ Cory Ender, Captain (*February 16, 2021*)
- ❖ Nate Fritchle, Captain (*February 16, 2021*)
- ❖ Kyle Carranza, Captain (*July 16, 2021*)
- ❖ Michael Hernandez, Captain (*July 16, 2021*)
- ❖ Scott Young, Engineer/Paramedic (*January 1, 2020*)
- ❖ Sean Canfield, Engineer/Paramedic (*February 16, 2021*)
- ❖ Chase Cantrell, Engineer/Paramedic (*July 16, 2021*)
- ❖ Chris Pane, Engineer/Paramedic (*July 16, 2021*)
- ❖ Michael Weeks, Engineer/Paramedic (*August 16, 2021*)
- ❖ Sarah Montagne, Accounting Technician (*March 16, 2021*)
- ❖ Dan Schaffer, Fire Prevention Specialist (*October 1, 2021*)

##### **Off Probations**

- ❖ Alicea Caccavo, Manager of Finance & Administration (*August 16, 2021*)
- ❖ Derek Wheeler, Firefighter/Paramedic (*April 16, 2020*)
- ❖ Alec Connelly, Firefighter/Paramedic (*April 16, 2020*)
- ❖ Manny Fernandez II, Firefighter/Paramedic (*March 16, 2021*)
- ❖ Ian O'Connor, Firefighter/Paramedic (*November 16, 2021*)

##### **New Hires**

- ❖ Blaine Nelson, Firefighter/Paramedic (*June 16, 2021*)
- ❖ Corbin Martinez, Firefighter/Paramedic (*August 1, 2021*)
- ❖ Mitchel Grant, Firefighter/Paramedic (*October 16, 2021*)

Rancho Santa Fe Fire Protection District  
Regular Board of Directors Meeting  
Minutes March 16, 2022



- ❖ Jenny Huesias, Office Support Coordinator (*June 16, 2021*)
- ❖ Mark Smith, Fire Service Assistant (*February 16, 2022*)

**b. Employee Recognition – Service Awards**

5-year

- ❖ Chase Cantrell
- ❖ Alex Trottier
- ❖ Marlene Donner
- ❖ Alicea Caccavo

10-year

- ❖ Nate Sanford
- ❖ John Carey
- ❖ Conor Lenehan
- ❖ Cory Ender
- ❖ Cole Thompson

15-year

- ❖ Brian Schmid
- ❖ Abel Martinez
- ❖ Joseph Carter
- ❖ Nate Fritchle

20-year

- ❖ Tim Wood

*Director Ashcraft conveyed to all those listed that the Board and the community appreciates the service and the sacrifices they have made. Chief McQuead conveyed his appreciation and his enthusiasm for the years ahead. Chief Slattery and Chief McQuead handed out badges to the new hires and services awards to the employees who have served the District for years marking milestones.*

**c. David B. Dewey Firefighter of the Year –**

**d. Non-safety Employee of the Year –**

*Director Ashcraft conveyed the significance of the awards, as they are voted on by their peers. He then announced the Employee of the Year and the Firefighter of the Year awards to Burgen Havens and Nathan Sanford, respectively.*

*1:22pm Meeting adjourned to the Board Room of the Administrative Offices*

*1:46pm Meeting reconvened*

**2. Motion waiving reading in full of all Resolutions/Ordinances**

MOTION BY DIRECTOR MALIN, SECOND BY DIRECTOR STINE, and CARRIED 4 AYES; 0 NOES; 1 ABSENT; 0 ABSTAIN to waive reading in full of all resolutions and/or ordinances.

**3. Consent Calendar**

MOTION BY DIRECTOR MALIN, SECOND BY DIRECTOR TANNER, CARRIED 4 AYES; 0 NOES; 1 ABSENT; 0 ABSTAIN to approve the consent calendar as presented and to adopt Resolution 2022-08.

Rancho Santa Fe Fire Protection District  
Regular Board of Directors Meeting  
Minutes March 16, 2022



a. Board of Directors Minutes

- Board of Directors minutes of March 16, 2022

b. Receive and File

- Monthly/Quarterly Reports

- (1) List of Demands Check 34834 thru 34932, Electronic File Transfers (EFT), and Wire Transfer(s) for the period March 2022 totaling:

	\$ 253,864.37
Wire Transfer(s) period March 2022	\$1,286,444.86
Payroll for the period March 2022	\$ <u>615,414.44</u>
TOTAL DISTRIBUTION	\$2,155,750.67
- (2) Grant Recap as of March 31, 2022
- (3) Activity Reports – March 2022
  - (a) Operations
  - (b) Training
  - (c) Fire Prevention

c. Resolution No. 2022-08

To adopt by consent Resolution No. 2022-08 – *entitled* A Resolution of the Board of Directors of the Rancho Santa Fe Fire Protection District Proclaiming A Local Emergency Persists, Re-Ratifying The Proclamation of a State Of Emergency by Governor Newsom’s Executive Orders N-25-30, Issued March 12, 2020; N-33-20 Issued March 19, 2020, and Re-Authorizing Remote Teleconference Meetings Of The Legislative Bodies of Rancho Santa Fe Fire Protection District for the Period March 19, 2022 through April 17, 2022 Pursuant to Brown Act Provisions

4. Public Comment

*None*

5. Old Business

*None*

6. New Business

*None*

7. Resolution/Ordinance

a. Resolution No. 2022-09

To discuss and/or adopt a resolution *entitled* A Resolution of the Board of Directors of the Rancho Santa Fe Fire Protection District Establishing Salaries and Benefits for Management Personnel.

*Manager Caccavo reported that the only change made to the Resolution was to include a one-time only discretionary payment of \$5000.00 to all Managers except the Fire Chief.*

MOTION BY DIRECTOR TANNER, SECOND BY DIRECTOR STINE, CARRIED 4 AYES; 0 NOES; 1 ABSENT; 0 ABSTAIN to ADOPT Resolution 2022-09 *entitled* a Resolution of the Board of Directors of the Rancho Santa Fe Fire Protection District Establishing Salaries and Benefits for Management Personnel on a roll call vote:

AYES:	Ashcraft, Malin, Stine, Tanner
NOES:	None
ABSTAIN:	None
ABSENT:	Hillgren

Rancho Santa Fe Fire Protection District  
Regular Board of Directors Meeting  
Minutes March 16, 2022



**b. Resolution No. 2022-10**

To discuss and/or adopt a resolution *entitled* A Resolution of the Rancho Santa Fe Fire Protection District Board of Directors Adopting Amendment No. 1 to a Memorandum of Understanding between the Rancho Santa Fe Fire Protection District and the Rancho Santa Fe Professional Firefighters Association – Local 4349. *Manager Caccavo reported that the only change made to the Resolution was to include a one-time only discretionary payment of \$5000.00 to active safety personnel, added to Amendment No. 1 of the Memorandum of Understanding between the Rancho Santa Fe Fire Protection District and the Rancho Santa Fe Professional Firefighters Association – Local 4349.*

MOTION BY DIRECTOR STINE, SECOND BY DIRECTOR MALIN, CARRIED 4 AYES; 0 NOES; 1 ABSENT; 0 ABSTAIN to ADOPTING Resolution 2022-10 *entitled* A Resolution of the Rancho Santa Fe Fire Protection District Board of Directors Adopting Amendment No. 1 to a Memorandum of Understanding between the Rancho Santa Fe Fire Protection District and the Rancho Santa Fe Professional Firefighters Association – Local 4349 on a roll call vote:

AYES:	Ashcraft, Malin, Stine, Tanner
NOES:	None
ABSTAIN:	None
ABSENT:	Hillgren

**c. Resolution No. 2022-11**

To discuss and/or adopt a resolution *entitled* A Resolution of the Board of Directors of the Rancho Santa Fe Fire Protection District Adopting Amendment No. 1 to a Memorandum of Understanding between the Rancho Santa Fe Fire Protection District and the Rancho Santa Fe Employees Association. *Manager Caccavo reported that there are two (2) changes made to the Resolution to Amendment No. 1 of the Memorandum of Understanding between the Rancho Santa Fe Fire Protection District and Rancho Santa Fe Employees Association: 1) to include a one-time only discretionary payment of \$5000.00 to active staff; and 2) the elected board agreed to accept the new position of Human Resource Analyst to the bargaining group.*

MOTION BY DIRECTOR MALIN, SECOND BY DIRECTOR TANNER, CARRIED 4 AYES; 0 NOES; 1 ABSENT; 0 ABSTAIN to ADOPTING Resolution 2022-11 *entitled* A Resolution of the Board of Directors of the Rancho Santa Fe Fire Protection District Adopting Amendment No. 1 to a Memorandum of Understanding between the Rancho Santa Fe Fire Protection District and the Rancho Santa Fe Employees Association on a roll call vote:

AYES:	Ashcraft, Malin, Stine, Tanner
NOES:	None
ABSTAIN:	None
ABSENT:	Hillgren

7. Oral Report

**a. Fire Chief:**

*None*

**b. Operations – Deputy Chief**

*Chief Slattery reported that 279 responses for the month; current fuel moistures are at the medium/average level. Chief Slattery reported on all current recruitment efforts underway and explained the process.*



Rancho Santa Fe Fire Protection District  
Regular Board of Directors Meeting  
Minutes March 16, 2022



c. **Training – Battalion Chief**

*None*

d. **Fire Prevention – Fire Marshal**

*Fire Marshal Donner reported that remaining lots in the District to be developed have been a challenge.*

e. **Manager, Finance & Administration**

*Manager Caccavo updated the board on the finance system implementation. Manager Caccavo reported on recruitment efforts in the administration and fire prevention departments.*

c. **Board of Directors**

I. North County Dispatch JPA – *Director Ashcraft North County Dispatch JPA met on February 23<sup>rd</sup>. They have moved in January and will have an open house in April. They have had some staff changes recently. Director Ashcraft reported on a particular call where the dispatchers were able to assist in saving a life. In 2020 they had 2735 calls and in 2021 call volume was reduced by approximately 2% to 2684 calls. Director Ashcraft reported on the different calls reported.*

II. County Service Area – 17 – *Director Stine will be attending the next meeting in May.*

III. **Comments:**

(1) Director Malin: *Chief Slattery answered questions on the reserves and the process that results in direct hires from the reserve program posed by Director Malin.*

(2) Director Stine: *None*

(3) Director Tanner: *None*

(4) Director Ashcraft: *None*

8. **Adjournment**

*Meeting adjourned at 2:19pm.*

---

Alicea Caccavo  
Board Clerk

---

James H. Ashcraft  
Board President

Check No.	Amount	Vendor	Purpose
34834	\$6,899.71	Aair Purification Systems	Building RSF4
34835	\$120.00	AFSS -Southern Division	Admin - Local Conf/Seminars
34836	\$402.19	AT&T	Telephone - RSF1, RSF2, RSF3, RSF5
34837	\$934.94	B & B Appliance Service Dept	Station Maintenance - RSF2, RSF3
34838	\$1,563.50	C.A.P.F.	Disability Ins Short & Long
34839	\$111.92	Charter Communications Holdings, LLC	Cable - Admin
34840	\$3,321.50	County of SD/RCS	CAP Code Paging Service-Monthly Service/800 MHz Network Admin Fees
34841	\$552.23	Cox Communications	Telephone/Cable - RSF5
34843	\$1,951.67	Direct Energy Business-Dallas	Elec/Gas/Propane - RSF1
34844	\$125.86	Dish	Cable RSF6
34845	\$406.71	EDCO Waste & Recycling Inc	Trash - RSF5, RSF6
34846	\$4,143.85	Eide Bailly LLP	Consulting Services- Financial (Platinum
34847	\$362.50	Engineered Mechanical Services Inc	Building RSF6
34848	\$139.15	Fire ETC Inc	Safety Clothing (Protective)
34849	\$65.00	Global Door & Gate Inc.	Building RSF2
34850	\$342.52	Griffin Hardware Co.	Station Maintenance - RSF2
34851	\$154.82	HANNA PLUMBING & SUPPLY INC	Building RSF4
34852	\$1,608.92	Jauregui & Culver Inc	Refuel Facility Repair
34853	\$72.28	Lexis Nexis DBA Matthew Bender & Co,	Books
34854	\$268.00	Liebert Cassidy Whitmore	Legal Services
34855	\$318.67	MES California	SCBA Maint & Repair/ Flow Test
34856	\$1,882.90	Olivenhain Municipal Water District	Water - RSF2, RSF4, RSF6
34857	\$2,129.97	Parkhouse Tire, Inc.	Apparatus: Tires & Tubes
34858	\$179.50	Race Telecommunications, Inc	Telephone RSF1
34859	\$323.06	Rincon Del Diablo Municipal Water Di	Water RSF5
34860	\$50.00	RSF Security Inc	Alarm System Monitoring RSF5
34861	\$5,204.94	SC Commercial LLC	Fuel: Gasoline & Diesel
34862	\$426.00	Terminix International	Building - RSF1, RSF3, RSF4, RSF5, Admin
34863	\$458.31	United Imaging	Office Supplies
34864	\$1,991.81	Verizon Wireless	Cellular - Telephone; CSA-17 Contract
34865	\$212.21	Vista Paint Corp.	Hydrant Maintenance
34866	\$80.75	Willis, Erwin L.	Computer Equipment/Parts
34867	\$30.00	AFSS -Southern Division	Admin - Local Conf/Seminars
34868	\$2,580.08	All Star Fire Equipment, Inc.	Safety Clothing (Protective)
34869	\$31.55	American Medical Response Inc	CSA-17 Contract
34870	\$2,020.64	AT&T Calnet 2/3	Telephone - RSF1, RSF2, RSF3, RSF4, RSF6, Admin

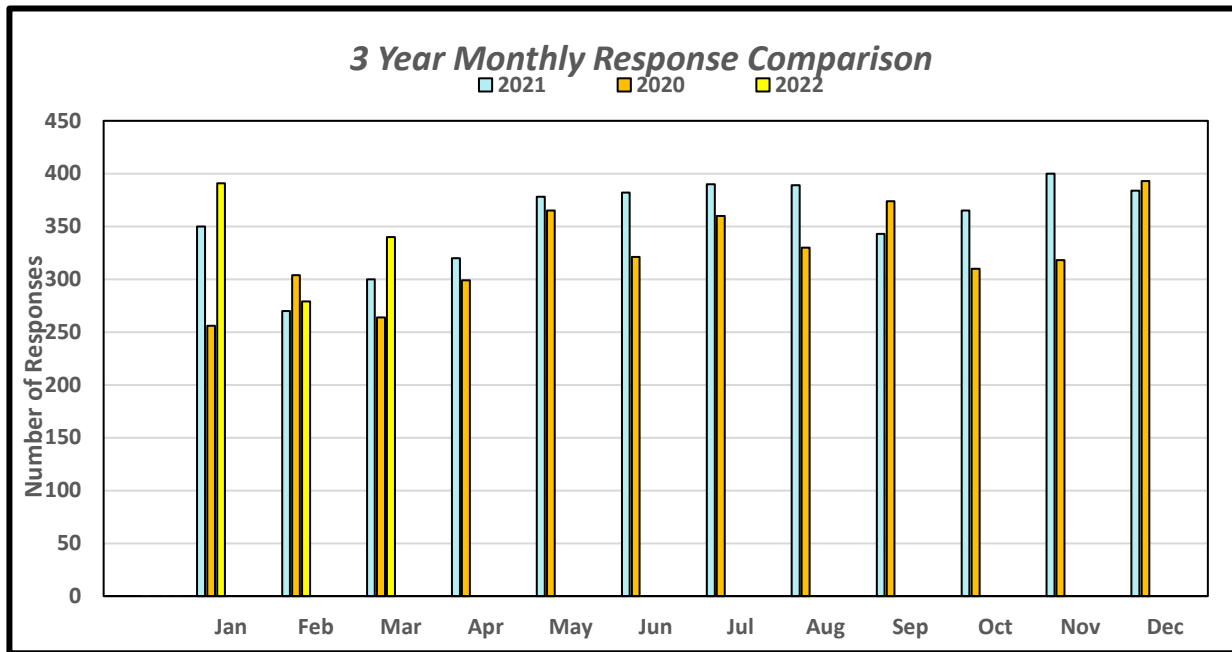
Check No.	Amount	Vendor	Purpose
34871	\$1,230.00	California's Own Native Landscape De	Landscaping RSF6
34872	\$38.01	Charter Communications Holdings, LLC	Cable RSF4
34873	\$1,501.00	County of San Diego, DEH	Permit: County/City
34875	\$39.47	EDCO Waste & Recycling Inc	Trash RSF6
34876	\$3,885.50	Fitch Law Firm Inc	Legal Services
34877	\$96.20	Konica Minolta Business Inc	Copier Maintenance Contract
34878	\$51.85	Nationwide Medical Surgical Inc	CSA-17 Contract
34879	\$174.27	Olivenhain Municipal Water District	Water RSF3
34880	\$3,339.00	Palomar College	Fire 98 - in service training program FF
34881	\$120.00	RSF Mail Delivery Solutions	Mail Delivery Service
34882	\$3,901.88	SC Commercial LLC	Fuel: Gasoline & Diesel
34883	\$1,062.62	SDG&E	Elec/Gas/Propane RSF6
34884	\$167.00	Terminix International	Building - RSF2, RSF6
34885	\$683.53	ThyssenKrupp Elevator Inc	Elevator Service
34886	\$695.37	TPX	Telephone ADMIN
34887	\$26,616.84	U S Bank Corporate Payment System	Cal-Card./IMPAC program
34888	\$3,048.70	Uniforms Plus	Uniforms: Safety Personnel, Admin, RSF6 (Volunteer)
34889	\$2,153.73	Waste Management Inc	Trash - RSF1, RSF2, RSF3, RSF4, RSF Assn - Patrol, NCDJPA Rebill
34890	\$7,500.00	WinTech Computer Services	Consulting Services
34891	\$225.00	Wood, Tim	CSA-17 Contract
34892	\$841.35	Reyes, Sandra N.	Awards/Proclamations
34893	\$640.00	Accme Janitorial Service Inc	Building ADMIN
34894	\$120.56	Airgas Inc	Safety: Breathing Air
34895	\$483.16	AT&T	Telephone - RSF1, RSF2, RSF3, RSF4, RSF5, RSF6, Admin
34897	\$347.05	B & B Appliance Service Dept	Station Maintenance - RSF3
34898	\$142.00	Business Owner's Ins Agency	Commercial - Liability - Auto Coverage
34899	\$26,206.00	Caselle, Inc.	2022 Accounting Software-Caselle
34900	\$441.88	Charter Communications Holdings, LLC	Cable - Admin
34901	\$342.19	Cintas Corporation No 2	Safety: Extinguishers (Service & Purchas
34902	\$95.00	Complete Office of California Inc	RSF 1 Remode/upgrades
34903	\$240.00	Costco Inc.	Association Dues
34904	\$3,249.00	County of SD/RCS	800 MHz Network Admin Fees
34905	\$1,896.15	Eide Bailly LLP	Consulting Services- Financial
34906	\$375.00	Engineered Mechanical Services Inc	Building RSF4
34907	\$2,157.50	Fader Electric Inc.	Building RSF1
34908	\$5,373.63	Fire ETC Inc	Safety Clothing (Protective), Safety Equipment

Check No.	Amount	Vendor	Purpose
34909	\$17,969.89	Gregory Johnson DBA Johnson Equipmen	Unit 2111 Equipment
34910	\$36.16	Griffin Hardware Co.	Station Maintenance - RSF2
34911	\$291.35	Henley Pacific LA LLC (Valvoline)	Scheduled - ID 1282, ID 1482, ID 1681, ID 2181
34912	\$2,121.56	Home Depot, Inc	Apparatus: Equipment, Parts & Supplies, Battery's - Engine Battery, Tool/Equipment Replacement; Fuel: Propane (Cooking), Janitorial Supplies, Hydrant Maintenance; Station Maintenance - RSF1, RSF2, RSF3, RSF5; Station Replacement Items - RSF2, RSF6
34913	\$2,586.01	Laerdal Medical Corp.	CSA-17 Contract
34914	\$1,110.12	Lincoln National Life Ins Co	Life Insurance/EAP
34915	\$250.00	Lorenzo, Paul	CSA-17 Contract
34916	\$4,202.25	MGM Plastics, Inc.	Unit 2111 Equipment
34917	\$115.93	Montagne, Sarah	Admin - Local Conf/Seminars
34918	\$367.50	Nationwide Medical Surgical Inc	CSA-17 Contract
34919	\$15,278.22	North County EVS Inc	Repair - ID 0461, 0811, 0311, 1411; Scheduled - ID 1411; 2111 Equipment
34920	\$315.94	Olivenhain Municipal Water District	Water RSF6
34921	\$142.14	Parkhouse Tire, Inc.	Apparatus: Tires & Tubes
34922	\$1,061.70	San Diego Union-Tribune, LLC	Advertising
34923	\$10,223.72	SC Commercial LLC	Fuel: Gasoline & Diesel
34924	\$13,197.25	SDG&E	Elec/Gas/Propane - RSF1, RSF2, RSF3, RSF4, RSF5, Admin
34925	\$195.00	Skyriders Window Cleaning Inc	Building - Admin
34926	\$375.00	Sound Image Inc	Radio (Portable) Repair
34927	\$426.00	Terminix International	Building - RSF1, RSF3, RSF4, RSF5, Admin
34928	\$1,259.80	Uniforms Plus	Uniforms: Safety Personnel, Prevention, RSF6 (Volunteer)
34929	\$14,509.52	Workplace Services Inc	Building RSF1 Upgrades
34930	\$19.16	Caccavo, Alicea I.	Admin - Meal/Lodging/Travel
34931	\$4,505.02	Guardian Life Insurance Co	Med/Dental - Retiree-Former Employees; Medical Insurance
34932	\$20,000.00	Rancho Santa Fe Fire Protection Dist	Interfund Transfer
EFT000000000759	\$634.50	Reyes, Sandra N.	Education/Training Reimbursement
EFT000000000760	\$135.00	Schieber, Michael	Education/Training Reimbursement
EFT000000000761	\$750.00	Sanford, Nathan	Miscellaneous Reimbursable
EFT000000000762	\$46.33	Reyes, Sandra N.	Janitorial Supplies; Awards/Proclamations
	\$791.20	Various	Medical Reimbursement
	<u>\$253,864.37</u>		

Check No.	Amount	Vendor	Purpose
ACH Transfer	\$1,000,000.00	CalPERS	UAL ADP March 2022
ACH Transfer	\$45,888.00	CalPERS	UAL ADP March 2022
ACH Transfer	\$167,699.79	CalPERS	CalPERS - February 2022 Retirement
ACH Transfer	\$72,857.07	CalPERS	CalPERS - April 2022 Retirement
<b>Subtotal</b>	<u>\$1,286,444.86</u>		
3/15/2022	264,876.98	Payroll	RSFFPD
3/31/2022	350,564.46	Payroll	RSFFPD
<b>Subtotal</b>	<u>\$ 615,441.44</u>		
<b>Total</b>	<u><u>\$2,155,750.67</u></u>		

# Rancho Santa Fe Fire Protection District Operations Report

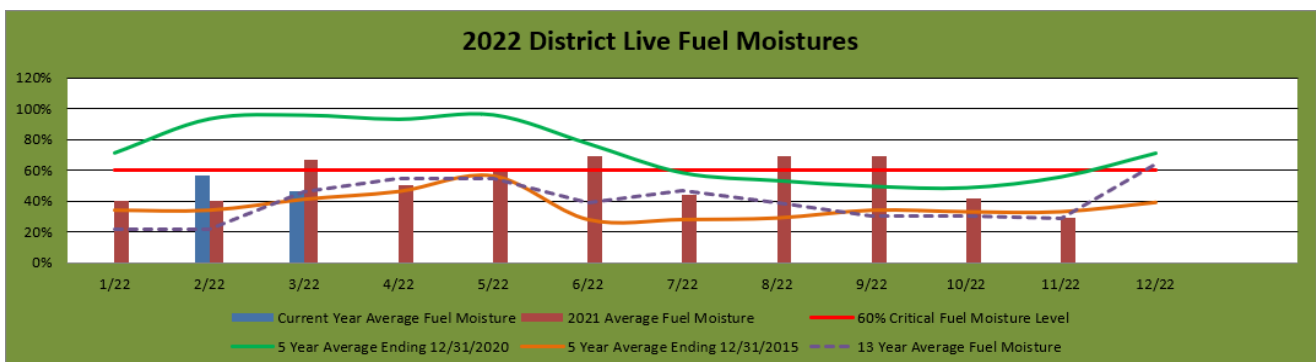
## March 2022



### 3 Year Call Volume Tracker:

	Jan	Feb	Mar	Apr	May	Jun	Jul	Aug	Sep	Oct	Nov	Dec	YTD Responses
<b>2022</b>													
Responses	391	279	340										1,010
YTD	391	670	1010										
<b>2021</b>													
Responses	350	270	300	320	378	382	390	389	343	365	400	384	4,271
YTD	350	620	920	1240	1618	2000	2390	2779	3122	3487	3887	4271	9.68%
<b>2020</b>													
Responses	256	304	264	299	365	321	360	330	374	310	318	393	3,894
YTD	256	560	824	1123	1488	1809	2169	2499	2873	3183	3501	3894	

### Monthly Fuel Moisture:

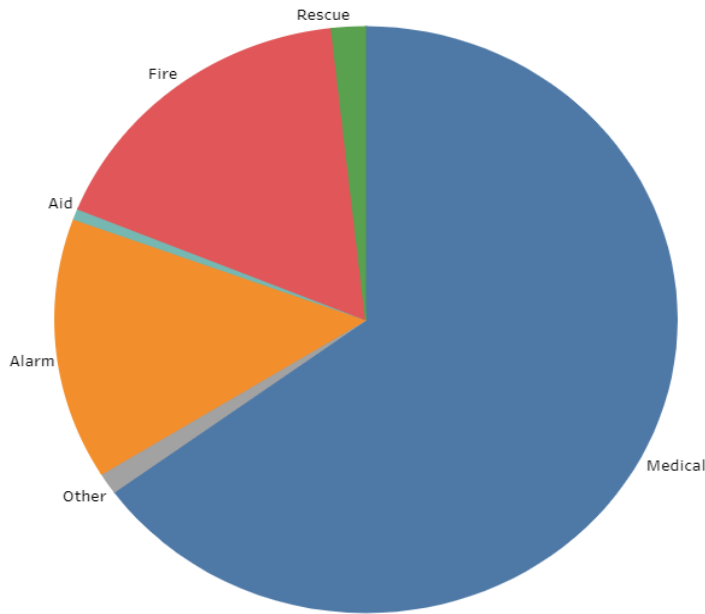


# Rancho Santa Fe Fire Protection District Operations Report

## March 2022

### Monthly Incidents

Assigned Incidents for RANCHO SANTA FE FPD  
March 2022



Agency  
RANCHO SANTA FE FPD

Month and Year  
March 2022

Medical	221 incidents / 65.00%
Fire	58 incidents / 17.06%
Alarm	49 incidents / 14.41%
Aid	2 incidents / 0.59%
Rescue	6 incidents / 1.76%
Other	4 incidents / 1.18%
<b>Grand Total</b>	<b>340 incidents / 100.00%</b>

Problem Category

- Medical
- Other
- Alarm
- Aid
- Fire
- Rescue

Assigned incidents for all RANCHO SANTA FE FPD units.

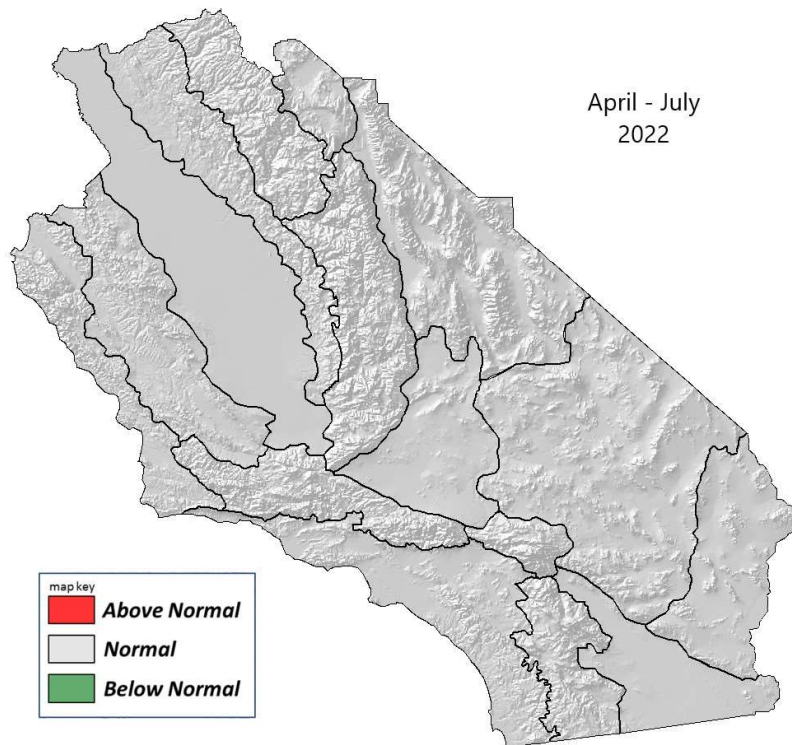
Data Last Updated: 4/6/2022 3:03:41 PM UTC

### Significant Incidents:

<b>Date:</b>	<b>Incident:</b>	<b>Units Assigned:</b>
2/20/2022	Auto Extrication / 16077 San Dieguito Rd	B261, E261, E263, M261, MAIR6
2/20/2022	2 Alarm Structure Fire / 235 25th St. Del Mar	B261, E261, E263
2/20/2022	2 Alarm Structure Fire / West 8th Ave., Escondido	B261, E265
3/4/2022	Vehicle Fire / 10448 Reserve Drive	E262

**Covid-19 Agency Status:** As of April 6th, 2022

	<u>Positive</u>
Fire Suppression Personnel	0
Administration and Prevention	0



**\*Monthly Images will only be shown when there are changes**

## **April 2022 - July 2022 South Ops Highlights**

- Temperatures will likely be above normal through July.
- Rainfall will likely be below normal through June.
- The amount of Santa Ana wind events will likely be near to a little above normal in April and May.
- The marine layer will likely be shallower and not penetrate as far inland as normal in May and June.
- Monsoon shower and thunderstorm activity will likely be near to above normal in July.

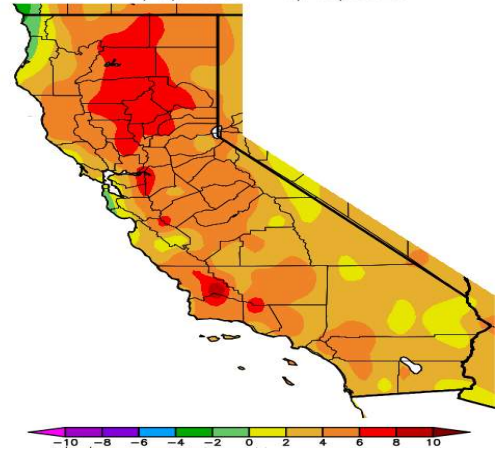




## Weather Discussion

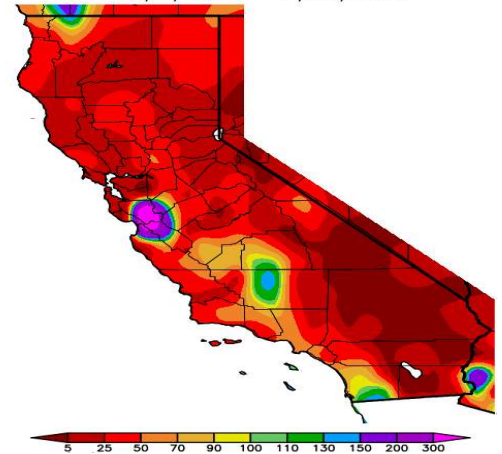
High pressure remained just off the California Coast most of March, just like it did in January and February. The area of high pressure caused temperatures to be above normal most of the month. However, a few troughs brought brief periods of below normal temperatures. Overall, temperatures were above normal in March, with the greatest anomalies over the coastal areas (**Fig 1**). Our first significant storm since the end of December occurred at the end of the month. Most locations away from the deserts received between a half inch and 2 inches of rainfall with this storm. The other troughs came out of the north and brought scattered showers with light precipitation totals on a few days. Most of the area received below normal precipitation in March. However, near to a little above normal precipitation occurred over the southern part of the San Joaquin Valley and southern San Diego County (**Fig 2**). The snowpack in the Sierra is now melting rapidly and it is currently between 40% and 50% of normal (**Fig 3**). Light to moderate Santa Ana wind events occurred throughout the month. There were brief periods of strong westerly winds over the mountains and deserts ahead of each trough.

Av. Max. Temperature dep from Ave (deg F)  
3/1/2022 – 3/30/2022



**Fig 1: March 1st - March 30th  
Temperature (% of Ave.)**

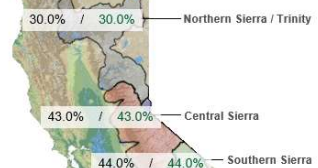
Percent of Average Precipitation (%)  
3/1/2022 – 3/30/2022



**Fig 2: March 1st - March 30th  
Precipitation (% of Ave.)**

Data For: 30-Mar-2022

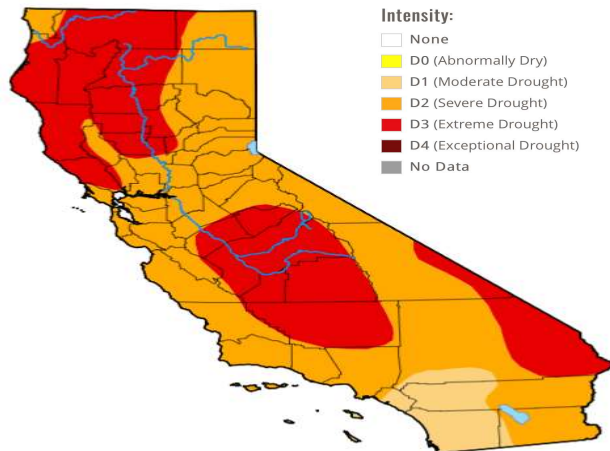
% Apr 1 Avg. / % Normal for this Date



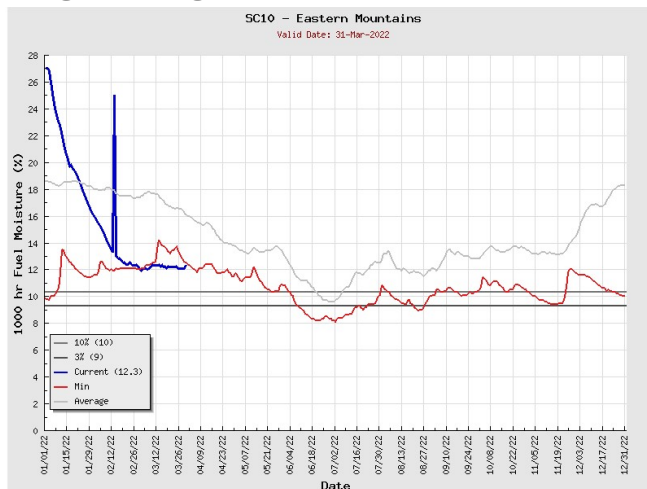
**Fig 3: Snow pack as of March 30th,  
2022**

## Fuels Discussion

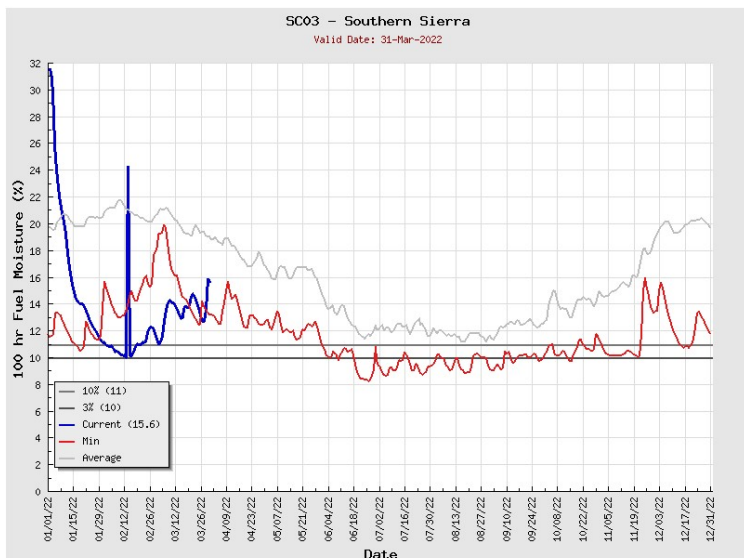
The drought is getting worse since precipitation has been well below normal since January (**Fig 4**). Most of the San Joaquin Valley as well as the deserts bordering Nevada and Arizona are now in extreme drought. The rest of Central and Southern California is mainly in severe drought. The only exception is that moderate drought continues from the mountains westward south of Los Angeles County. Both the 1000-hr and 100-hr dead fuel moisture remained below normal and broke record low values most of the month (**Figs 5 @ 6**). The curing phase of the fine fuels across the lower elevations has started to begin. The live fuel moisture is now starting to decrease, but it remains well above normal (**Fig 7**). Usually, the live fuel moisture peaks in early to mid-April so we are around a month ahead of schedule.



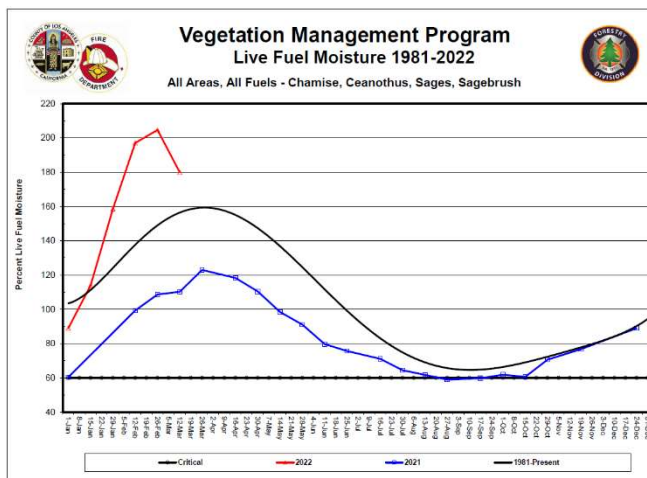
**Fig 4: Drought Monitor March 31st, 2022**



**Fig 5: Eastern Mountains 1000 hr Dead fuel moisture March 31st**



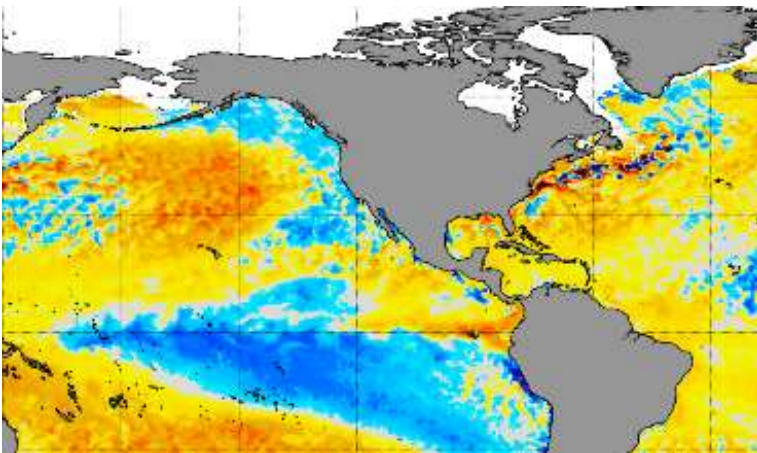
**Fig 6: Southern Sierra 100 hr Dead fuel moisture March 31st**



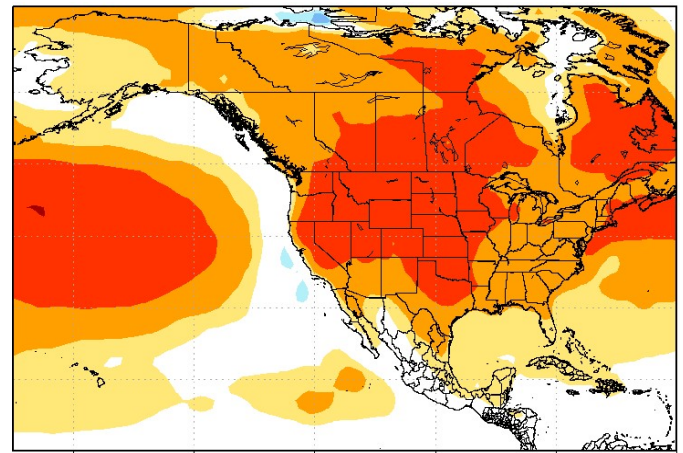
**Fig 7: LA County Live Fuel Moisture March 15th**

## SOUTH OPS OUTLOOK

Sea surface temperatures are warming both over the Gulf of Alaska and Equatorial Pacific and are expected to continue to warm through the summer months (**Fig 8**). The sea surface temperatures off the West Coast have cooled to a little below normal, but computer models show that these sea surface temperatures will warm to a little above normal over the next several months (**Fig 9**). Thus, expect the area of high pressure to remain just off the California Coast through the middle of June. This area of high pressure will continue to bring above normal temperatures and below normal precipitation to the region. Troughs moving into the Great Basin and Desert Southwest from the Pacific Northwest will bring occasional Santa Ana wind events to Southern California in April and May, but they will get weaker with time as the temperature gradient relaxes. Still expecting the marine layer over the coastal areas to be more shallow than normal in May and June. Even though temperatures will likely be above normal and precipitation below normal through June, the potential for large fire will be near to a little below normal due to well below normal fine fuel loading. The area of high pressure off the California Coast will become centered over the interior during the end of June and July as the land mass warms. Looking for the area of high pressure to migrate back and forth between the Four Corners Area and the Great basin. In this position, monsoon flow will push into Central and Southern California. There will likely be near to above normal monsoon shower and thunderstorm activity during the summer months. Even though temperatures will likely remain above normal this summer, expect near to a little below normal large fire potential due to the shower activity from the monsoon.



**Fig 8: Sea Surface Temperature Anomaly, March 30<sup>th</sup>, 2022**



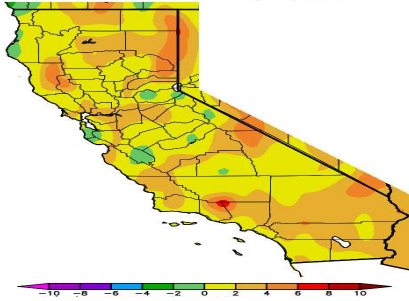
**Fig 9: Forecast Temperature Anomalies for April through July, March 30<sup>th</sup>, 2022**





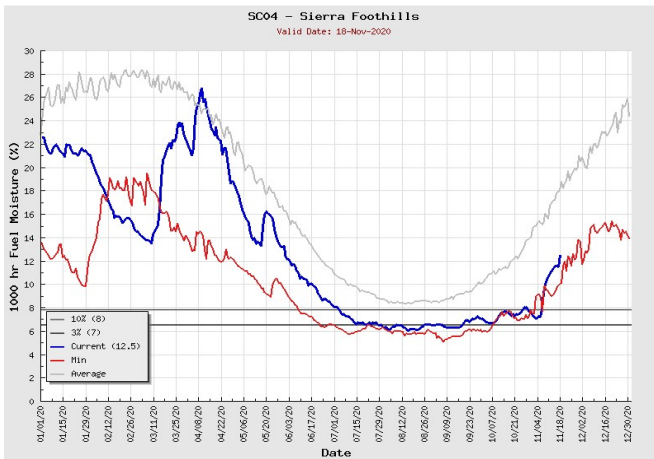
## Select Intel Links used in the forecast

Av. Max. Temperature dep from Ave (deg F)  
 11/1/2020 - 11/19/2020



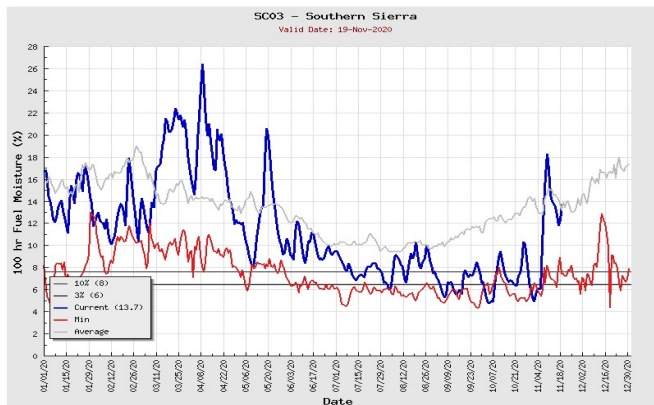
### Climate

- <https://calclim.dri.edu/pages/anommaps.html>



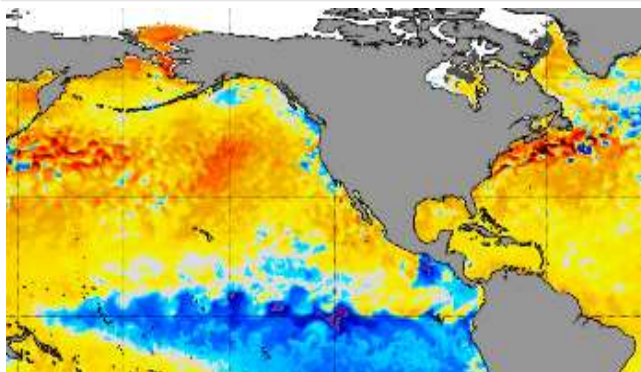
### 1000 hr dead fuel moisture

- [https://gacc.nifc.gov/oscc/fuelsFireDanger\\_Thousand.php](https://gacc.nifc.gov/oscc/fuelsFireDanger_Thousand.php)



### 100 hr dead fuel moisture

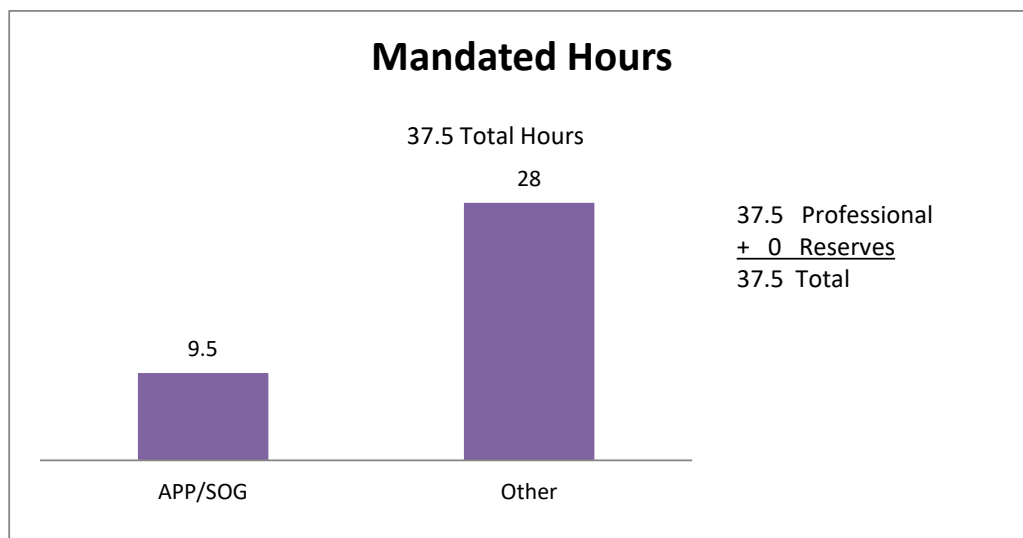
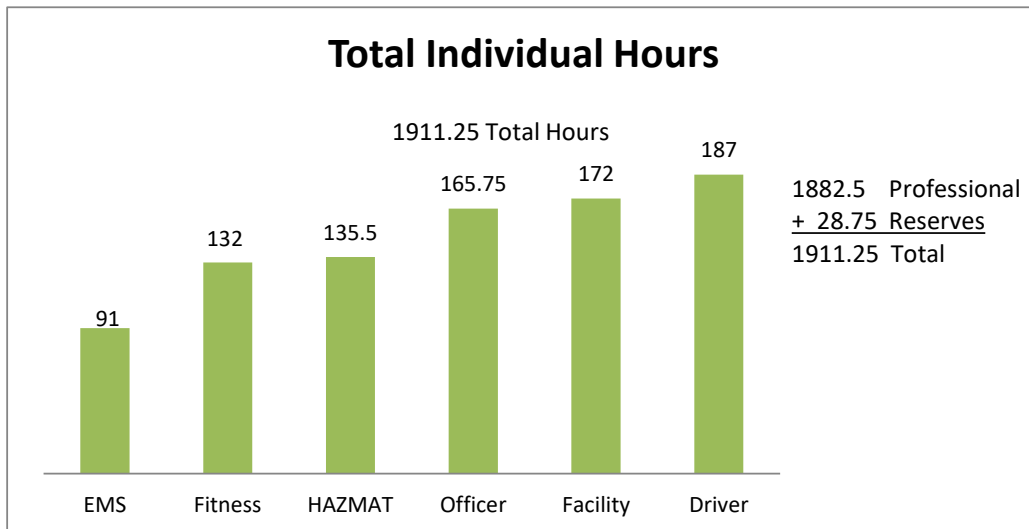
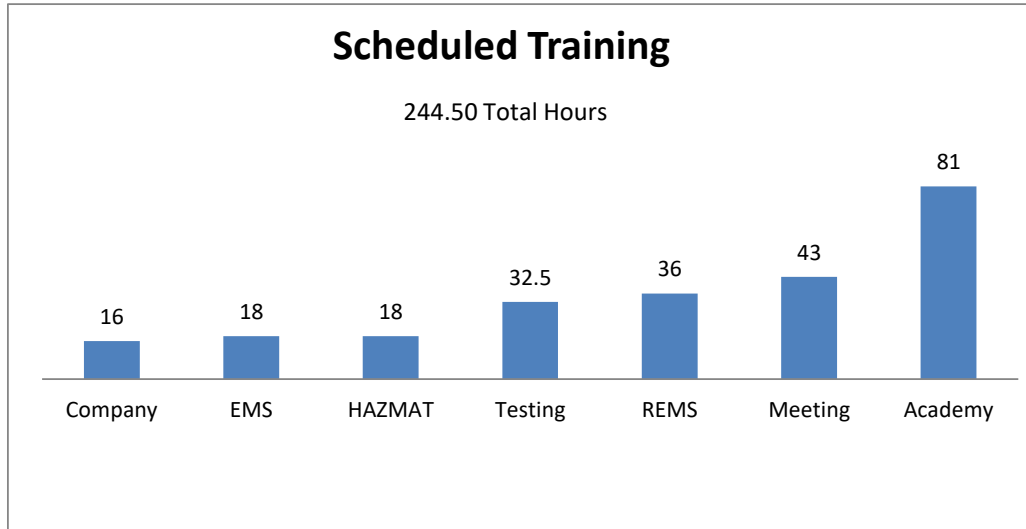
- [https://gacc.nifc.gov/oscc/fuelsFireDanger\\_Hundred.php](https://gacc.nifc.gov/oscc/fuelsFireDanger_Hundred.php)



### Current sea surface temperatures

- <https://www.ospo.noaa.gov/Products/ocean/sst/anomaly/>

**Training Division  
March 2022**



See next page for descriptions.

## Training Division - Descriptions

<b>Scheduled Training</b>		
Training hours are planned annually. This is to maintain a well organized year and to help the firefighters be successful with the hours required by Federal, State, Local.		
<b>Total Individual Hours - 6 Subjects</b>		
<b>Subject</b>	<b>Definition</b>	<b>Examples</b>
<b>Company</b>	Documentation of all Company Training that is not Driver, Officer, Haz-Mat, or Facility Training.	Aerial Ladder, Hose, Ladders, Physical Fitness, SCBA, Technical Rescue, Ventilation, etc.
<b>Driver</b>	This is for documenting Driver Training hours. Per ISO standards employees considered a "Driver" will be required to complete 12 hours of Driver Training annually. You can use this same form to record Driver Training hours for Non-Drivers and it will be counted towards Company Training.	Apparatus Inspections & Maintenance, Basic Hydraulics, Defensive Driving, Maps, Driving Heavy Vehicles, Etc.
<b>Facility</b>	This is live training conducted at an approved site. For the location to be approved it must have at least two acres on the property, a three story tower, and a burn facility. It is also important to note that the training must not just occur on the approved site, but the facility itself must be used. If your users are just sitting in a classroom at an approved site, this cannot count towards facility hours and the completion would need to be applied elsewhere. However, if the classroom portion was followed by utilization of the facility, the entire time could count towards Facility Training.	Company Evolutions, NFPA 1410 Driver/Operator, NFPA 1002 Fire Officer, NFPA 1021 Firefighter Skills, NFPA 1001 Hazardous Materials, NFPA 472 Live Fire, NFPA 1403 Other NFPA Fire Based Training
<b>HazMat</b>	This is for documenting Hazardous Materials Training hours. Per ISO standards all firefighters are required to complete 6 hours of Hazardous Materials Training annually.	DOT Guidebook Review, Decontamination Procedures, First Responder Operations, Etc.
<b>Officer</b>	Per ISO standards employees considered a "Officer" will be required to complete 12 hours of Officer Training annually. You can use this same form to record Officer Training hours for Non-Officers and it will be counted towards Company Training.	Dispatch, General Education, Meetings, Orientation, Exam, Management Principles, Personnel, Promotional, Public Relations, Etc.
<b>EMS</b>	EMS is not tracked or required by Insurance service Organization for Rating. EMS Continuing Education is tracked for recertification of Paramedics (48/2yrs) and EMT (24/2yrs). Through Emergency Service Medical Administration (EMSA).	Continuing Education and SIMS
<b>Mandated Hours</b>		
Hours completed through an assignment on an online database (Target Solutions). Mandated assignments are required by either Federal, State, Local.		

PLAN REVIEWS					
Plan Type	# of New Reviews	# of Resubmittals	Approved New SQFT (Mit Fees)	SQFT Reviewed (No Mit Fees)	Total SQFT Reviewed
New Residential	14	5	18966	39946	58912
Residential Additions/Remodels	9	9	6550	5816	12366
New Commercial	0	0	0	0	0
Commercial T.I.	8	2	0	52968	52968
Tents/Special Events	2	0	0	0	0
Rack Storage	0	0	0	0	0
Preliminary	3	2	7355	31215	38570
Fire Suppression Systems	12	5	0	0	0
Alarms	3	0	0	0	0
Landscaping	22	4	0	0	0
Grading/Mylars/Improvement Plans	4	4	0	0	0
Underground	5	0	0	0	0
Hood System	0	0	0	0	0
Tanks	0	0	0	0	0
Cell Sites	0	0	0	0	0
DSS/CCL	0	0	0	0	0
DPLU	1	0	0	0	0
Solar Panels	1	0	0	0	0
High Piled Storage	0	0	0	0	0
High Hazard/Communications/Other	0	0	0	0	0
Spray Booth	0	0	0	0	0
Fire Protection Plans	0	0	0	0	0
Technical Reports	0	0	0	0	0
<b>TOTAL</b>	<b>84</b>	<b>31</b>	<b>32871</b>	<b>129945</b>	<b>162,816</b>

<b>INSPECTIONS</b>	
<b>Inspection Type</b>	<b># of Inspections</b>
Alarms	-
Fire Supression Systems	17
Building Construction	10
Landscaping	4
Tent/Special Event	6
Gates/Knox	3
Site Visit	4
Technical Report/FPP	-
Underground	7
Annual Inspection	5
DSS Licensing	-
Other	3
<b>TOTAL</b>	<b>59</b>

<b>SPECIAL PROJECTS</b>	
<b>Project Type</b>	<b># of Projects</b>
Grants	-
GIS	1
Forms (Updates/New)	1
Project Research	-
Computer Programming/I.T.	1
Emergency Response Support	-
Annual Mailer (Weed Abatement)	1
Board Report Formatting/ Design	-
Other	2
<b>TOTAL</b>	<b>6</b>



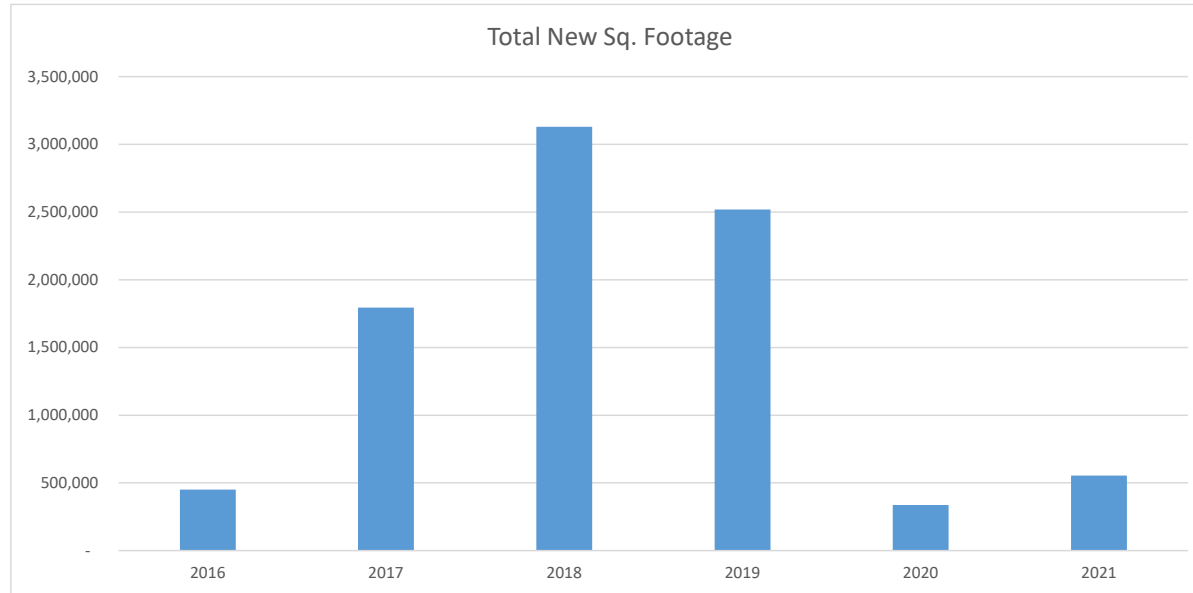
<b>MEETINGS</b>	
<b>Meeting Type</b>	<b># of Meetings</b>
H.O.A	-
Staff	12
Board	1
On-Site Project Meetings	18
In-Office Project Meetings	22
Shift	-
Captain's	-
Weed Abatement	4
County	3
Code Development	-
Support/I.T. Development	-
San Diego County FPO's	5
Community Stakeholder Meetings	2
North Zone	2
Other	1
<b>TOTAL</b>	<b>70</b>

<b>TRAINING/EDUCATION</b>	
<b>No. of Training Classes</b>	<b>Staff Hours</b>
0	80
0	0
0	0
0	40
<b>TOTAL</b>	<b>120</b>

<b>WEED ABATEMENT</b>	
<b>Activity</b>	<b># of Inspections</b>
Weed Abatement Inspection	-
Weed Abatement Reinspection	-
1st Notice	-
Final Notice	-
Posting	-
Notices Printed	-
Abated	-
Forced Abatement	5
<b>TOTAL</b>	

<b>OFFICE SUPPORT</b>	
<b>Activity</b>	<b># Completed</b>
Phone Calls	887
Correspondence	5,578
Walk in/Counter	223
Knox Application Request	2
Burn Permits	3
Plans Accepted/Routed	83
Special Projects	-
Scanning Documents/Electronic Files	141
Meetings: Admin/Prevention/Admin Shift	3
Post Office Runs	-
Deposit Runs/Preparations	4
<b>TOTAL</b>	<b>6,924</b>

Rancho Santa Fe Fire Protection District  
**Fire Prevention Bureau Monthly Activity Summary**



**Total New Square Footage (\*Reflected in Chart Above)**

Year	Total
2016	450,437
2017	1,793,936
2018	3,128,964
2019	2,519,545
2020	336,899
2021	554,173
2022	90,432

**2020 Total New Square Footage Only**

	Jan	Feb	Mar	Apr	May	Jun	Jul	Aug	Sep	Oct	Nov	Dec
<b>2020</b>	29,226	41,043	38,102	25,751	38,400	7,290	16,516	15,384	77,848	15,070	22,529	9,740
<b>2021</b>	29,808	23,298	50,000	29,760	7,104	19,361	24,413	1,794	33,357	106,768	99,103	
<b>2022</b>	42,895	14,666	32,871									

**Comparison 2019/2020/2021 Total Reviewed Square Footage**

	Jan	Feb	Mar	Apr	May	Jun	Jul	Aug	Sep	Oct	Nov	Dec
<b>2019</b>	240,861	691,306	274,736	307,024	412,556	248,869	287,395	424,065	250,518	742,439	440,335	137,995
<b>2020</b>	40,748	86,593	145,794	76,506	54,651	42,950	47,950	91,532	163,417	127,963	59,192	47,677
<b>2021</b>	90,462	89,135	111,456	98,218	118,557	151,000	203,116	254,055	312,253	0	171,023	
<b>2022</b>	128,254	204,226	129,945									

## **RESOLUTION No. 2022-12**

**A RESOLUTION OF THE BOARD OF DIRECTORS OF THE RANCHO SANTA FE FIRE PROTECTION DISTRICT PROCLAIMING A LOCAL EMERGENCY PERSISTS, RE-RATIFYING THE PROCLAMATION OF A STATE OF EMERGENCY BY GOVERNOR NEWSOM'S EXECUTIVE ORDERS N-25-30, ISSUED MARCH 12, 2020; N-33-20 ISSUED MARCH 19, 2020, AND RE-AUTHORIZING REMOTE TELECONFERENCE MEETINGS OF THE LEGISLATIVE BODIES OF RANCHO SANTA FE FIRE PROTECTION DISTRICT FOR THE PERIOD APRIL 13, 2022 THROUGH MAY 12, 2022 PURSUANT TO THE BROWN ACT PROVISIONS.**

**WHEREAS**, the Rancho Santa Fe Fire Protection District is committed to preserving and nurturing public access and participation in meetings of the Board of Directors; and

**WHEREAS**, all meetings of Rancho Santa Fe Fire Protection District's legislative bodies are open and public, as required by the Ralph M. Brown Act (Cal. Gov. Code 54950 – 54963), so that any member of the public may attend, participate, and watch the District's legislative bodies conduct their business; and

**WHEREAS**, the Brown Act, Government Code section 54953(e), makes provision for remote teleconferencing participation in meetings by members of a legislative body, without compliance with the requirements of Government Code section 54953(b)(3), subject to the existence of certain conditions; and

**WHEREAS**, a required condition is that a state of emergency is declared by the Governor pursuant to Government Code section 8625, proclaiming the existence of conditions of disaster or of extreme peril to the safety of persons and property within the state caused by conditions as described in Government Code section 8558; and

**WHEREAS**, a proclamation is made when there is an actual incident, threat of disaster, or extreme peril to the safety of persons and property within the jurisdictions that are within the District's boundaries, caused by natural, technological or human-caused disasters; and

**WHEREAS**, it is further required that state or local officials have imposed or recommended measures to promote social distancing, or, the legislative body meeting in person would present imminent risks to the health and safety of attendees; and

**WHEREAS**, the Board of Directors previously adopted a Resolution, Number 2021-16 on September 29, 2021, finding that the requisite conditions exist for the legislative bodies of Rancho Santa Fe Fire Protection District to conduct remote teleconference meetings without compliance with paragraph (3) of subdivision (b) of section 54953; and

**WHEREAS**, as a condition of extending the use of the provisions found in section 54953(e), the Board of Directors must reconsider the circumstances of the state of emergency that exists in the District, and the Board of Directors has done so; and

**WHEREAS**, emergency conditions persist in the District, specifically, specifically, the Covid-19 state of emergency remains active and the Governor's Covid-19 Emergency Proclamation of March 4, 2020 remains in effect; and

**WHEREAS**, the Board of Directors does hereby find that, social distancing has been ordered by state and local public health authorities due to the imminent health and safety risks of in person contacts and meetings during the COVID-19 emergency; and

**WHEREAS**, the Board of Directors recognizes the social distancing orders of state and local public health authorities, and hereby finds that the state of emergency related to Covid-19, and the risk of contagion of Covid-19 for attendees at in-person meetings has caused, and will continue to cause, conditions of peril to the safety of persons within the District that are likely to be beyond the control of services, personnel, equipment, and facilities of the District; and

**WHEREAS**, the Board of Directors desires to affirm a local emergency exists, re-ratify the proclamation of state of emergency by the Governor of March 4, 2020, and re-ratify the state and local orders of public health authorities for social distancing; and

**WHEREAS**, as a consequence of the local emergency persisting, the Board of Directors does hereby find that the legislative bodies of Rancho Santa Fe Fire Protection District shall continue to conduct their meetings without compliance with paragraph (3) of subdivision (b) of Government Code section 54953, as authorized by subdivision (e) of section 54953, and that such legislative bodies shall continue to comply with the requirements to provide the public with access to the meetings as prescribed in paragraph (2) of subdivision (e) of section 54953; and

**WHEREAS**, the Board of Directors adopted virtual meeting protocols on April 15, 2020, which include options for public participation.

NOW, THEREFORE, THE BOARD OF DIRECTORS OF Rancho Santa Fe Fire Protection District DOES HEREBY RESOLVE AS FOLLOWS:

Section 1. Recitals. The Recitals set forth above are true and correct and are incorporated into this Resolution by this reference.

Section 2. Affirmation that Local Emergency Persists. The Board of Directors hereby considers the conditions of the state of emergency related to COVID-19 in the District and proclaims that a local emergency persists throughout the District, recognizes that social distancing orders have been issued by state and local public health authorities, and finds that in person meetings would present imminent risks to the health and safety of attendees.

Section 3. Re-ratification of Governor's Proclamation of a State of Emergency. The Board hereby ratifies the Governor of the State of California's Proclamation of State of Emergency, effective as of its issuance date of March 4, 2020.

Section 4. Remote Teleconference Meetings. The Staff and legislative bodies of Rancho Santa Fe Fire Protection District are hereby authorized and directed to take all actions necessary to carry out the intent and purpose of this Resolution including, continuing to conduct open and public meetings in accordance with Government Code section 54953(e) and other applicable provisions of the Brown Act.

Section 5. Effective Date of Resolution. This Resolution shall take effect immediately upon its adoption and shall be effective until the earlier of (i) May 12, 2022, or such time the Board of

Directors adopts a subsequent resolution in accordance with Government Code section 54953(e) (3) to extend the time during which the legislative bodies of Rancho Santa Fe Fire Protection District may continue to teleconference without compliance with paragraph (3) of subdivision (b) of section 54953.

**PASSED AND ADOPTED** by the Board of Directors of Rancho Santa Fe Fire Protection District], this 13th day of April 2022 by the following vote:

AYES:  
NOES:  
ABSENT:  
ABSTAIN:

---

James H. Ashcraft  
Board President

ATTEST:

---

Alicea Caccavo  
Board Clerk

---

---

# STAFF REPORT

NO. 22-02

**TO:** BOARD OF DIRECTORS  
DAVE MCQUEAD, FIRE CHIEF

**FROM:** BRIAN SLATTERY, DEPUTY CHIEF

**SUBJECT:** APPARATUS PURCHASE

**DATE:** APRIL 13, 2022

---



## RECOMMENDATION

Staff recommends authorizing the Fire Chief to enter into a formal contract with Firematic Manufacturing for the purchase of one (1) Type VI fire apparatus.

This purchase will be funded in the FY22/23 budget.

The following budget action is requested for approval and/or modification:

Description	FY23 Capital Plan	Funding Sources
Purchase: (1) Type 6 Fire Apparatus	Approved \$450,000 <i>Includes expenses for Equipment to outfit</i>	Fire Mitigation 85% = \$382,500  General Fund 15% = \$61,765

## BACKGROUND

Station 6 of the Elfin Forest Community historically had a Type 1 Structure Engine, a Type 3 Brush Engine and a Water Tender. When this station was absorbed by RSFFPD, we relocated some of these type of apparatus with the addition of a fully staffed (3 person) Station 5 in Harmony Grove. Station 6 has only 2 personnel (Captain & Engineer) and has been equipped with a Type I Engine (Structure), a Water Tender, and a Utility Truck that tows the ATV (typically used for Trail Rescues).

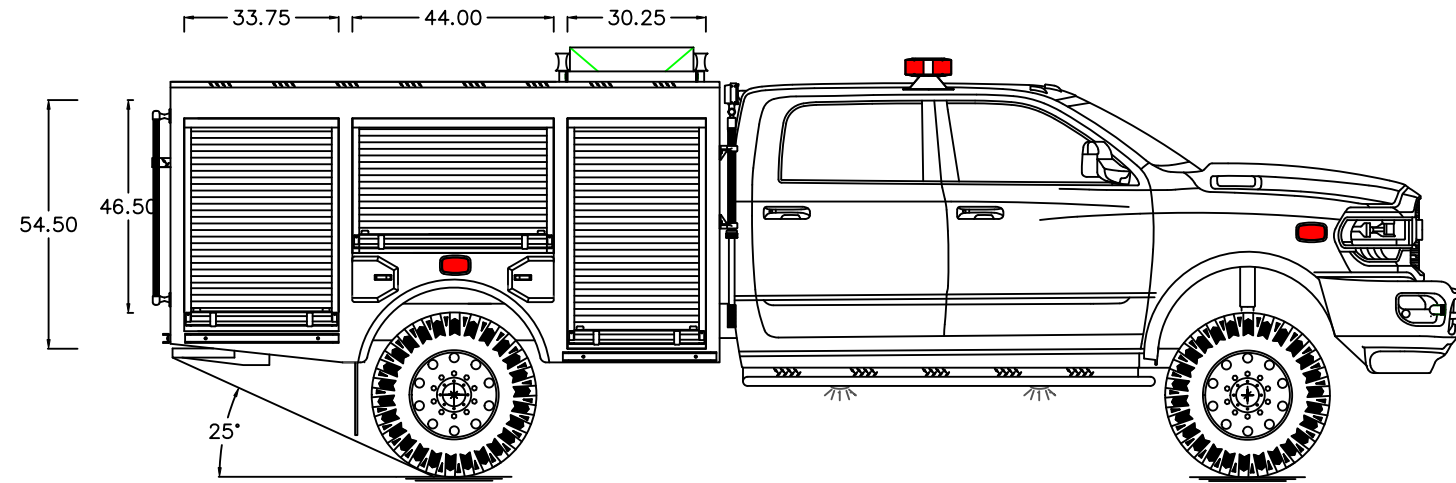
The challenge in this community is the access of many of the properties with a Type I apparatus due to narrow or steep driveways, and dirt roads. Currently the personnel will choose to take a Type I apparatus whenever possible but will use the Utility truck for medical aids when there is difficult access. They also use the utility to tow the ATV. The current utility truck has no working pump and very limited capabilities.

The best fit for this community is a well-equipped Type VI apparatus. This will provide the best and quickest access to the majority of the community. It will be equipped with 300 gallons of water and adequate hose to initiate structure fire attacks. In addition, it will be more offroad capable enabling a

quicker attack at any wildland fire. A full complement of medical equipment for any ALS calls, towing for ATV trail rescues, and room for extrication tools on vehicle accidents.

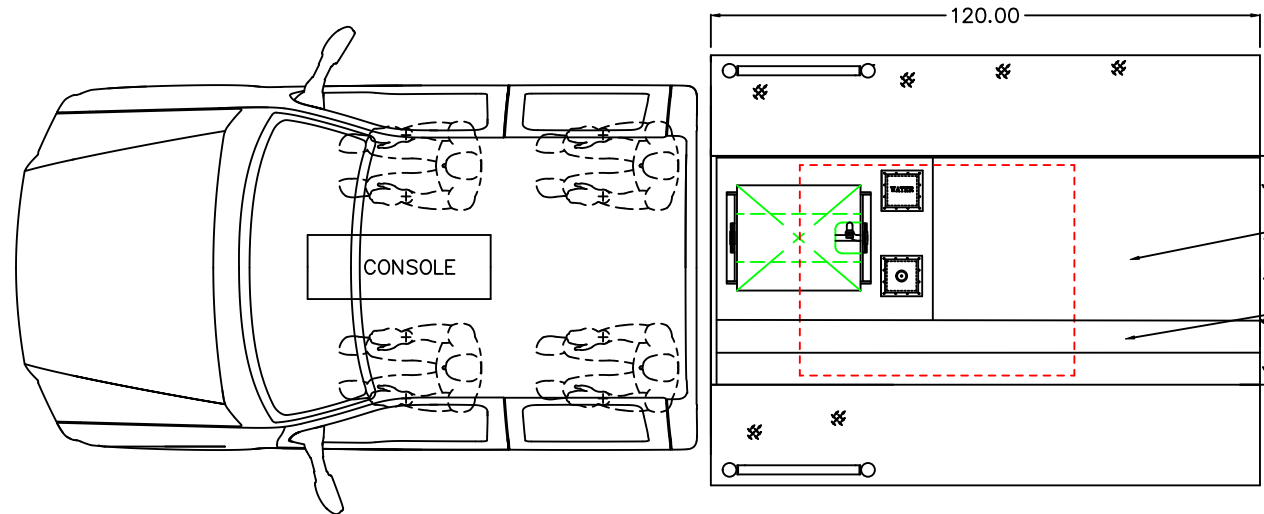
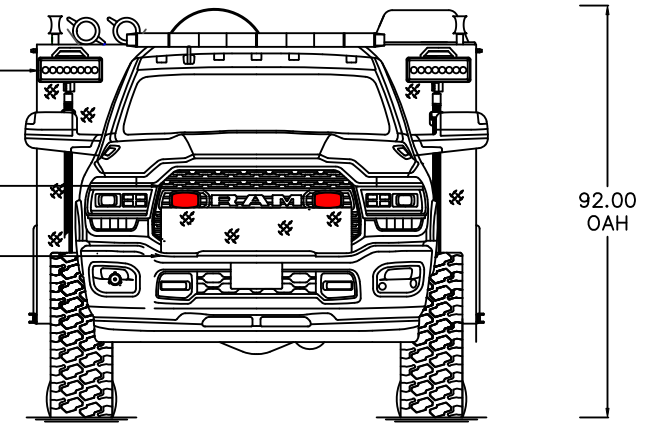
This Type VI equipment will provide faster Fire / EMS / Rescue capabilities. A Type I apparatus responding from Station 5 or San Marcos will be the backup for an extended structure fire incident as well as the complement of the First Alarm.





FRC SPECTRUM  
LED TELESCOPING  
SCENE LIGHTS

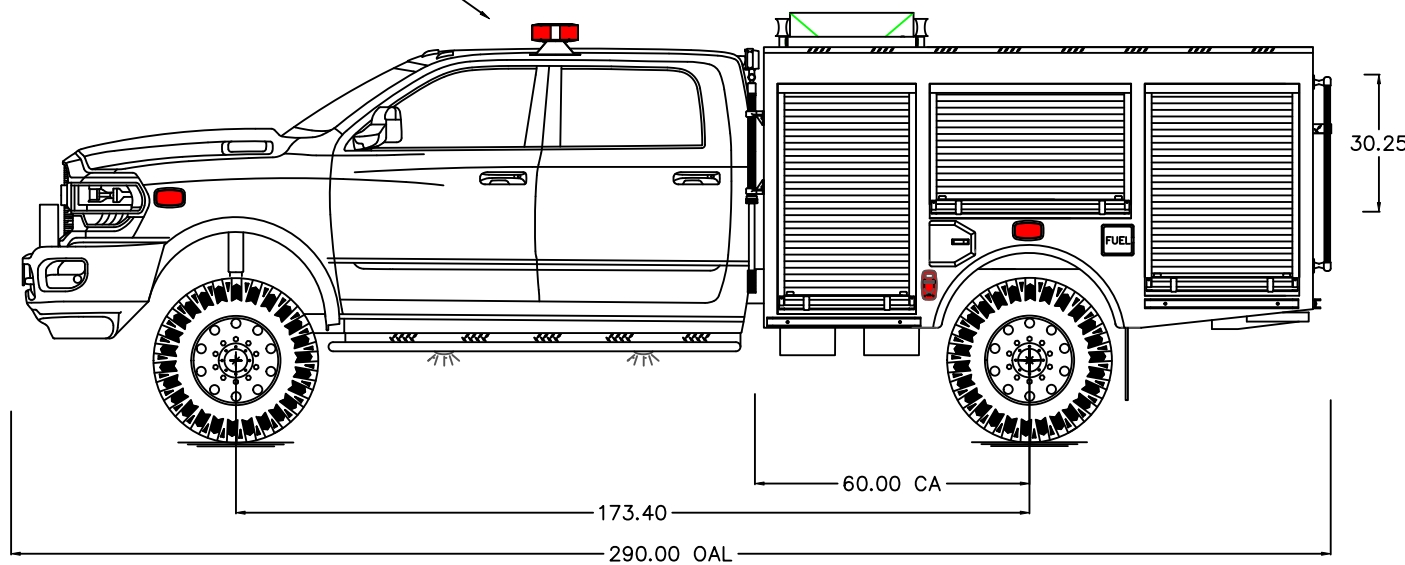
WHELEN M6  
SUPER LED  
WARNING LIGHTS  
1.5" OUTLET AND  
50' HOSELAY  
TRAY



5" HOSEBED AREA

TWO 1.75 PRECONNECT  
BEDS

WHELEN LED LIGHT BAR



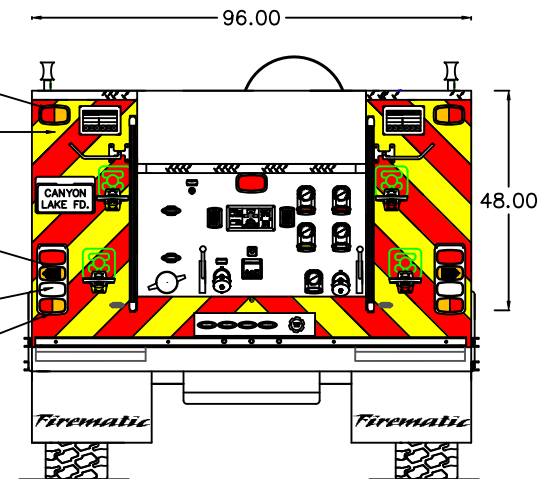
WHELEN M6 LED  
ZONE LIGHTS

WHELEN PIONEER  
LED SCENE LIGHTS

WHELEN M6 LED  
TAIL/STOP TURN LIGHTS

WHELEN M6 LED  
BACK-UP LIGHTS

WHELEN M6 LED  
ZONE LIGHTS



**NOTE**  
THIS DRAWING IS CONCEPTUAL AND IS NOT AN EXACT REPRESENTATION OF THE TRUCK DRAWN. DIMENSIONS SHOWN ARE APPROXIMATE AND ARE SUBJECT TO DEVIATION AS MAY OCCUR OR BE NECESSARY DURING CONSTRUCTION.

SOME DETAILS NOT SHOWN. DIMENSIONS ARE IN INCHES.

300/10 GALLON POLY-TANK  
HALE PTO 250 GPM PUMP  
ALUMINUM COMPARTMENT BODY W/ ROM DOORS

REVISION	NOTES
A	
B	

**Firematic** MANUFACTURING

TITLE: **BRAT INITIAL ATTACK TRUCK**  
FOR: **RANCHO SANTA FE FD.  
RANCHO SANTA FE, CA**

JOB NO.	2099
DATE	APR 5, 2022
CHASSIS DATA	DODGE 5500 CREW CAB
DRAWN BY	D. HORTON
APPROVED BY	D. HORTON
SHEET NO.	1 / 1



**CONTRACT PRICING WORKSHEET**  
For MOTOR VEHICLES Only

Contract No.: FS12-19

Date Prepared: 4/8/2022

*This Worksheet is prepared by Contractor and given to End User. If a PO is issued, both documents **MUST** be faxed to H-GAC @ 713-993-4548. Therefore please type or print legibly.*

Buying Agency:	Rancho Santa Fe FD.	Contractor:	Firematic Supply Co. Inc.
Contact Person:	Cory Enders	Prepared By:	David Horton
Phone:	760-481-2910	Phone:	631-995-3246
Fax:		Fax:	
Email:	<a href="mailto:cenders@rsf-fire.org">cenders@rsf-fire.org</a>	Email:	dhorton@firematic.com

Product Code:	MC01	Description:	Firematic, B.R.A.T. Commercial Pumper
---------------	------	--------------	---------------------------------------

**A. Product Item Base Unit Price Per Contractor's H-GAC Contract:** \$251,550.00

**B. Published Options - Itemize below - Attach additional sheet(s) if necessary - Include Option Code in description if applicable.**  
(Note: Published Options are options which were submitted and priced in Contractor's bid.)

Description	Cost	Description	Cost
FOP15 Firematic Custom Side Steps and Nerf Bars	4,329		
FOP11 Single wheel/tire spare	1,430		
FOP25 Body Compartment Interior Paint	2,893		
FOP77 Foam System, FoamPro, 1601, Class A	8,275		
FOP95 Water Tank Gauge, Electric, Rear & Chass	1,250		
FOP100 Foam Tank Gauge, Electric, Rear & Chassis	1,030		
FOP96 Foam Tank Capacity, 10 Gallons, Class A,	1,000		
FOP1 Kussmaul Shoreline with Auto Eject	1,590		
FOP8 FRC Telescoping Dual LED Scenelight X 2	4,076		
FOP11 Single wheel/tire spare	1,430		
FOP7 Whelen Surface Mount Dual LED Scenelight	3,114		
		<b>Subtotal From Additional Sheet(s):</b>	0
		<b>Subtotal B:</b>	30417

**C. Unpublished Options - Itemize below / attach additional sheet(s) if necessary.**  
(Note: Unpublished options are items which were not submitted and priced in Contractor's bid.)

Description	Cost	Description	Cost
300 GPM PTO pump in lieu of 1,250 midship	-4,675	CONTINGENCY PLAN	2,000
DODGE 5500 CHASSIS IN LIEU OF FORD	5,000		
LIVE DRIVE PTO MODIFICATION	5,689		
		<b>Subtotal From Additional Sheet(s):</b>	12016
		<b>Subtotal C:</b>	20030

**Check:** Total cost of Unpublished Options (C) cannot exceed 25% of the total of the Base Unit Price plus Published Options (A+B). For this transaction the percentage is: 7%

**D. Total Cost Before Any Applicable Trade-In / Other Allowances / Discounts (A+B+C)**

Quantity Ordered:	1	X Subtotal of A + B + C:	301997	=	<b>Subtotal D:</b>	301997
-------------------	---	--------------------------	--------	---	--------------------	--------

**E. H-GAC Order Processing Charge (Amount Per Current Policy)** **Subtotal E:** 2000

**F. Trade-Ins / Other Allowances / Special Discounts / Freight / Installation**

Description	Cost	Description	Cost
PERFORMANCE BOND	739.89	Sales Tax	23,404.77
		Tire Fee	10.5
Training at factory at time of final inspection	N/C		
		<b>Subtotal F:</b>	24155.16

**Delivery Date:** 8-Apr-23 **G. Total Purchase Price (D+E+F):** 328152.16

**PATROL**

**B.R.A.T.**<sup>TM</sup>

**B R U S H R A P I D A T T A C K T R U C K**

*Specifications: Rancho Sante Fe FD*

Firematic Manufacturing  
10 Ramsay Road  
Shirley, NY 11967  
631-924-3181

## **INTENT OF SPECIFICATIONS**

It shall be the intent of these specifications to cover the furnishing and delivery of a completed apparatus equipped as hereinafter specified. These specifications cover only the general requirements as to the type of construction and test to which the apparatus shall conform, together with certain details as to finish, equipment and appliances with which the successful bidder shall conform. Minor details of construction and materials, which are not otherwise specified, are left to the discretion of the contractor, who shall be solely responsible for the design and construction of all features. Loose equipment shall be provided only as stated in the following pages.

## **STANDARDS**

The completed apparatus shall comply with all relevant FMVSS Federal Motor Vehicle Safety Standards and will also be NFPA 1906 compliant. A Final - stage Manufacturer's Compliance Label shall be permanently applied to the vehicle that contains the name and mailing address of the final stage manufacture, the date of final manufacture, the GVWR as per those applied by the previous manufacture, a clear and precise description of any changes that it has made to the incomplete vehicle.

## **DRAWINGS**

CAD designed drawings of the vehicle as proposed shall be supplied. Views include both side front and rear and show full pump panel detail. No Manufacturing or shearing shall take place until the drawings have been signed off at the pre construction conference. Any final design alterations shall be at the discretion off the Fire Company.

## **QUALITY AND WORKMANSHIP**

The design of the apparatus shall embody the latest approved automotive engineering practices. The workmanship shall be of the highest quality in its respective field. Special consideration shall be given to the following points: Accessibility of the various units, which require periodic maintenance, ease of operation (including both pumping and driving) and symmetrical proportions. Construction shall be rugged and ample safety factors shall be provided to carry the loads specified and to meet both on and off road requirements and speed conditions as set forth under "Performance Tests and Requirements". Welding shall not be employed in the assembly of the apparatus in a manner that shall prevent the ready removal of any component part for service or repair.

**DELIVERY**

The apparatus shall be delivered under its own power by a qualified driver representing the contractor.

**INFORMATION REQUIRED**

Firematic shall supply at time of delivery, complete operation and maintenance manuals covering the completed apparatus as delivered. A permanent plate shall be mounted in the driver's compartment which specifies the quantity and type of fluids required including engine oil, engine coolant, transmission, pump transmission lubrication, pump primer and drive axle.

**PERFORMANCE TESTS AND REQUIREMENTS**

A road test shall be conducted with the apparatus fully loaded and a continuous run of ten (10) miles or more shall be made under all driving conditions, during which time the apparatus shall show no loss of power or overheating. The transmission drive shaft or shafts, and rear axles shall run quietly and be free from abnormal vibration or noise throughout the operating range of the apparatus.

**FAILURE TO MEET TEST**

In the event the apparatus fails to meet the test requirements of these specifications on the first trial, second trials may be made at the option of the bidder within 30 days of the date of the first trial. Such trials shall be final and conclusive and failure to comply with these requirements shall be cause for rejection. Failure to comply with changes to conform to any clause of the specifications, within 30 days after notice is given to the bidder of such changes, shall also be cause for rejection of the apparatus. Permission to keep or store the apparatus in any building owned or occupied by the purchaser or its use by the purchaser during the above-specified period with the permission of the bidder shall not constitute acceptance.

**GENERAL CONSTRUCTION**

The apparatus shall be designed with due consideration to distribution of load between the front and rear axles. Weight balance and distribution shall be in accordance with the recommendations of the National Fire Protection Association.

**COMMERCIAL GENERAL LIABILITY INSURANCE**

Firematic shall, during the performance of the contract and for three (3) years following acceptance of the product, keep in force at least the following minimum limits of commercial general liability insurance:

General Aggregate	\$2,000,000
Products/Completed Operations Aggregate	\$1,000,000
Personal and Advertising Injury	\$1,000,000
Each Occurrence	\$1,000,000

Coverage shall be written on a Commercial General Liability form. The policy shall be written on an occurrence form and shall include Contractual Liability coverage. The policy shall include owner as an additional insured as their interest may appear.

The required limits can be provided by one or more policies provided all other insurance requirements are met.

Coverage shall be provided by a carrier(s) rated "Excellent" by A.M. Bests.

**UMBRELLA/EXCESS LIABILITY INSURANCE**

Firematic shall, during the performance of the contract and for three (3) years following acceptance of the product, keep in force at least the following minimum limits of umbrella liability insurance:

Aggregate: \$4,000,000  
Each Occurrence: \$4,000,000

The policy shall be written on an occurrence basis and at a minimum provide the same coverage's as Manufacturer's General Liability, Automobile Liability and Employer's Liability policies. Owner shall be included as an additional insured on the General Liability and Automobile Liability policies as their interest may appear. The required limits can be provided by one or more policies provided all other insurance requirements are met.

Firematic agrees to furnish owner with a current Certificate of Insurance with the coverage listed above along with its bid. The certificate shall be made out to the purchaser and be an original, no photocopies shall be accepted. The Certificate of Insurance shall provide that owner be given 30 days advance notice of cancellation, nonrenewable or material change in coverage.

**MAXIMUM OVERALL HEIGHT**

The maximum overall height of the apparatus shall be 92.00”.

**MAXIMUM OVERALL LENGTH**

The maximum overall length of the apparatus shall be 290.00”



## **WARRANTY**

Firematic shall warranty each piece of new fire or rescue apparatus to be free from defects in materials or workmanship under normal use and service. The manufacturer's obligation under this warranty is limited to repairing or replacing, as the company may elect, any parts thereof which are returned to them, with transportation costs prepaid and as to which examination is disclose to the company's satisfaction to have been defective. The part, or parts, shall be returned to the manufacturer not later than one (1) year from delivery of the apparatus. Such defective part, or parts, shall be repaired or replaced free of charge and without charge for installation to the original purchaser.

This warranty shall not apply:

- 1) To normal maintenance and adjustments.
- 2) To any vehicle which has been repaired or altered outside of the factory in any way so that, in the manufacturer's judgment, it would affect the stability. Also it shall not apply to any vehicle, which has been subject to misuse, neglect, or accident, or to any vehicle, which shall operate at any speed, exceeding the factory rated speed, or loaded beyond the factory rated load capacity.
- 3) To commercial chassis and associated equipment furnished with the chassis, signaling devices, generators, batteries, or other trade accessories in which they are usually warranted separately by their respective manufacturers.

This warranty is in lieu of all other warranties, expressed or implied, all others representations to the original purchaser and all other obligations or liabilities, including liability for incidental or consequential damages on the part of the company. The manufacturer neither assumes or authorizes any other person to give or assume any other warranty or liability on the company's behalf, unless made or assumed in writing by the company.

## **CHASSIS**

2022 – Dodge 5500 chassis 19,500 MGWV

4 Door Crew Cab

4 x 4 Drive Train, Shift on the fly

Cummins Diesel Engine 6.7 L I6 360 H.P.

6-Speed Electric OD Transmission

Power Steering

Power Brakes

Cloth Driver's and crew seats

Dodge Flame Red Paint

Wheel Base 173.40", 60" CA

Factory Chrome front bumper

Power Mirrors

4-Wheel ABS Brakes

Driver and Passenger Air Bags

Power windows and locks

Black vinyl floor mats

Front and Rear Tow Hooks

UConnect 5 system with 8.4" screen

Dual 78 AH Batteries

Engine Block Heater

Dual Alternators 440 Amps Total

Maximum Front GAWR Package

Limited Slip 4.88 1-Axle Ratio

Air Conditioning

Daytime Running Lights

Fuel Tank Skid Plate

Roof clearance lights

Trailer Tow Package.

NFPA compliant Ember protection (air filter and ember separator for cab)

All modifications, equipment, maximum manpower, and carrying capacity of water must not exceed the manufacturers (Dodge) maximum GVWR of 19,500 lbs.



### **LIVE DRIVE MODIFICATION**

The Dodge chassis will be delivered from the factory as new, a Live Drive 4x4 transfer case modification allowing a PTO drive shaft to pass through it to drive the PTO pump.

Full Dodge warranty (3 years/36,000) still applies and in no way affects any operation of the truck.

### **SUPER SINGLE WHEEL CONVERSION**

The apparatus will be delivered with special steel wheels to allow single rear wheels and new front wheels. The wheel offsets will be adjusted for aligning the front and rear truck width to within 1/8". An aftermarket 2.5" suspension lift will be installed and the rear front fender well will be modified for tire clearance.

The wheels will be 19.5" diameter with matching hub and stud location. They will be powder coated black.

### **TIRES**

Founders Radial MT tires, size 305/70R19.5 that allows for the proper overall weight of the apparatus will be installed on the special rims. Brass valve stems will be required. The entire rim and tire will be balanced. Inflation pressure will be 105 psi. A spare wheel/tire that's balanced will be supplied with loose, not mounted on vehicle.

### **OVERALL DESIGN**

The body for the rescue truck will be manufactured entirely of aluminum. The diamondette and roll up doors will also be aluminum. No exceptions will be allowed in regards to the aluminum material. The body will be 120" overall length and the overall width shall not be less than approximately 96" with the super single wheels and tires.

The 300/10 gallon water/foam tank will be built by Propoly with a Lifetime guarantee.

The six (6) compartments will have ROM rollup doors with a painted finish.

The pump will be a Hale AP50 pump driven by a Muncie pto bolted to the truck transmission. The pump platform will consist of a stainless steel plumbing manifold, an aluminum powder coated pump panel, one 2.5" direct discharge, two 1 1/2" outlets for an upper preconnects and one 1" outlet for a hose reel. Also a 2.5" rear auxiliary inlet and 4.5" main inlet.

## **BODY & COMPARTMENTATION CONSTRUCTION**

- The body and compartmentation shall be designed and fabricated of .125 5052-H32 Aluminum. The body will be welded together with 5356 Aluminum and bonded with Lord Adhesive to obtain ultimate strength.
- Formed compartment design for body strength and durability.
- All compartments shall be sweep out with no lip at the bottom edge.
- All screws and bolts that protrude into any of the aluminum shall be treated with ECK™ corrosion preventative to prevent a chemical reaction causing corrosion and or paint lifting.
- The rear lower body will be beveled to increase departure angle. The angle will be no less than 24 degrees.
- Wheel wells will be fully lined and ¼” rubber mudflaps will be installed.
- A cast aluminum fuel fill door will be installed to the rear of the driver’s side wheel well.
- All compartments will be vented.
- Side and rear rub rails that are 2” polished aluminum, will be bolted under each side front/rear compartments and the pump panel.

## **SUBFRAME**

- The body shall be attached to and supported by a heavy -duty aluminum sub frame.
- The sub frame shall be u-bolted to the chassis frame in the front of the body to allow for independent flexing of the body in relation to the chassis frame. The sub frame shall be bolted solid in the rear of the frame.
- ½” thick rubber is inserted between the sub fame and the chassis frame.
- The sub frame shall be caulked and under coated to prevent corrosion of the body and sub frame.
- No welding shall be allowed to the truck frame in front of the rear axles.
- **Due to the importance of sub frame flexibility and corrosion resistance; there shall be no exception to these requirements.**

## **INTERIOR FINISH**

Each side compartment will be painted with a gray textured finish with premium wear ability.

## **DRIVER SIDE COMPARTMENTATION**

There shall be three roll up door compartments on the left side of the body.

**D1-** The forward compartment shall be approximately 30.25" wide x 54.50" high x 22.00" deep. Floors shall be sweep out design.

Dual LED strip lights will be installed on either side of the door and actuated by a magnetic proximity switch.

One (1) locking ROM roll up door with a painted finish shall be provided for this compartment.

Also one adjustable aluminum shelf with a 2" lip will be provided.

**D2-** The over rear wheel compartment shall be approximately 44.00" wide x 35.50" high x 22.00" deep. Floors shall be sweep out design.

Dual LED strip lights will be installed on either side of the door and actuated by a magnetic proximity switch.

One (1) locking ROM roll up door with a painted finish shall be provided for this compartment.

**D3 -** The rear side compartment shall be approximately 33.75" wide x 46.50" high x 22.00" deep. Floors shall be sweep out design.

Dual LED strip lights will be installed on either side of the door and actuated by a magnetic proximity switch.

One (1) locking ROM roll up door with painted finish shall be provided for this compartment.

Also one adjustable aluminum shelf with a 2" lip will be provided.

## **OFFICER SIDE COMPARTMENTATION**

There shall be three roll up door compartments on the right side of the body.

**P1-** The forward compartment shall be approximately 30.25" wide x 54.50" high x 22.00" deep. .

Dual LED strip lights will be installed on either side of the door and actuated by a magnetic proximity switch.

One (1) locking ROM roll up door with a painted finish shall be provided for this compartment.

Also one adjustable aluminum shelf with a 2" lip will be provided.

**P2-** The over rear wheel compartment shall be approximately 44.00" wide x 35.50" high x 22.00" deep compartment . Floors shall be sweep out design.

Dual LED strip lights will be installed on either side of the door and actuated by a magnetic proximity switch.

One (1) locking ROM roll up door with a painted finish shall be provided for this compartment.

**P3-** The rear side compartment shall be approximately 33.75" wide x 46.50" high x 22.00" deep. Floors shall be sweep out design.

Dual LED strip lights will be installed on either side of the door and actuated by a magnetic proximity switch.

One (1) locking ROM roll up door with a painted finish shall be provided for this compartment.

One (1) adjustable shelf shall be provided in this compartment.

### **SCBA STORAGE**

Three (3) SCBA bottle storage compartments will be provided in the rear wheel well area of the apparatus. Each storage compartment will have a capacity of one (1), SCBA air cylinder with a single hinged door and latch. Storage will be provided in the passenger's side wheel well for two (2), SCBA bottles one (1), on each side of the rear axle. Also one will be provided in the front driver's side wheel well.

The compartment doors will be constructed of cast aluminum and secured by a full length stainless steel hinge and a chrome finish lift and turn lock with a positive latch assembly.

### **FOLDING STEPS – REAR**

Four (4), folding or fixed steps will be provided at the rear of the apparatus, two (2) each side of the pump panel. The steps will be constructed of die cast high strength zinc/aluminum alloy. The exterior surfaces are bright polished then chrome plates to CASS 24 specifications. Each step will have integral LED lighting to illuminate the stepping surface. Each step will conform to NFPA requirements. There will be no more than 22" vertical distance between the steps as installed on the apparatus. The steps will be located on the left side of the body.

### **PULL OUT STEPS**

One (1) Ziamatic 24" wide steel pull out step will be installed under the rear of the body on each side of the pump panel.

### **REAR VERTICAL HANDRAIL**

Two (2) vertically mounted handrails will be installed at the rear of the apparatus. The handrails will be constructed of 1.25" diameter extruded aluminum with a knurled finish and attached to the body with chrome stanchions. The handrails will be mounted on each side of the rear compartment.

### **I-ZONE BRACKETS**

Two (2) swing out I-Zone brackets from Cascade Fire equipment will be installed on the rear of the body, one per side.

### **WHEEL CHOCKS**

Two (2) Ziamatic aluminum chocks will be installed horizontally under the front driver's side compartment.

### **CAB ACCESS STEPS RUNNING BOARDS**

Custom 5086 aluminum, 1.5" pipe side steps for the drivers and passenger's sides will be topped with skid resistant NFPA compliant diamond plate and will be fabricated and bolted directly to cab body mounts and the cab.

Step, structure and diamond plate to be powder coated black mini Tex.

### **WATER TANK**

The water tank will be of Poly material and will have a lifetime guarantee. The tank will be of rectangular design 48" wide x 68" length x 30" high and holds 300 gallons of water and a 10 gallon foam cell. The tank will have two (2) bucket fill hinged doors located at the forward portion of the tank.

The water tank will have a 4" overflow thru the floor of the tank and will be part of the top fill box assembly. A tank to pump line will be provided via a 3" NPT bushing. The bushing will be installed at the rear of the tank on the driver's side one inch from the floor and two inches in from the left side. A tank refill line will be provided in the rear wall, the bushing will be 1 ½" NPT.

A 10 gallon foam cell with lockable lid will also be installed on the rear of the tank.

One (1) Fire Research water level and one foam level five (5) light indicator will be installed on the pump console and slaved mini indicators shall be supplied in the custom console in the cab.

The tank will have a front and rear two bolt "L" bracket mount that is an integral part of the tank.

## **PUMP**

The fire pump will be a Hale AP 300 gpm single stage centrifugal PTO mounted pump. The pump will be capable of the following performance:

- 100% of rated capacity at 150 psi net pump pressure
- 70% of rated capacity at 200 psi net pump pressure
- 50% of rated capacity at 250 psi net pump pressure.

The Hale APS pump will be mounted between the chassis frame rails behind the cab and driven by a Muncie PTO bolted to the truck transmission. The pump will be driven via a newly fabricated driveshaft from the PTO. No exceptions will be allowed on the pump. The PTO will be hot shift and engage by a switch mounted in the cab.

The entire pump shall be manufactured and tested at the pump manufacturer's factory.

The entire pump, both suction and discharge passages, shall be hydrostatically tested to a pressure of 500 PSI. The pump shall be fully tested at the pump manufacturer's factory to the performance spots as outlined by the latest NFPA Standard 1901. Pump shall be free from objectionable pulsation and vibration.

The pump body and related parts shall be of fine grain alloy cast iron, with a minimum tensile strength of 30,000 PSI. All moving parts in contact with water shall be of high quality bronze or stainless steel. Pump utilizing castings made of lower tensile strength cast iron not acceptable.

Pump body shall be vertically split, on a single plane, for easy removal of impeller assembly, including clearance rings.

Pump shaft to be rigidly supported by two bearings for minimum deflection. The bearings shall be heavy-duty, deep groove ball bearings in the gearbox and they shall be splash lubricated.

The pump shaft shall have only one mechanical seal. The mechanical seal shall be spring loaded, maintenance free and self-adjusting. (No exceptions.)

Pump impeller shall be hard, fine grain bronze of the mixed flow design; accurately machined, hand-ground and individually balanced. The vanes of the impeller intake eye shall be hand-ground and polished to a sharp edge, and be of sufficient size and design to provide ample reserve capacity utilizing minimum horsepower.

Impeller clearance rings shall be bronze, easily renewable without replacing impellers or pump volute body.

The pump shaft shall be electric furnace heat-treated and corrosion resistant with a positive impeller lock. Pump shaft must be sealed with double lip oil seal to keep road dirt and water out of gearbox.

### **GEARBOX**

The gearbox shall be manufactured and tested at the pump manufacturer's factory.

Pump gearbox shall be of sufficient size to withstand the torque of the engine in pump operating conditions. The gearbox shall be designed of ample capacity for lubrication reserve and to maintain the proper operating temperature.

The gearbox drive shaft shall be of heat-treated chromium steel and shall withstand the torque of the engine in pump operating conditions.

All gears shall be of highest quality electric furnace chrome nickel steel. Bores shall be ground to size and teeth integrated, crown-shaved and hardened, to give an extremely accurate gear for long life, smooth, quiet running and higher load carrying capability. An accurately cut spur design shall be provided. (No exceptions.)

The pump ratio shall be selected by the apparatus manufacturer to give maximum performance with the engine, transmission and power take-off selected.

An electric Hale oilless primer will be installed.

### **INLET PLUMBING**

A 4.0" NH male inlet will be installed at the rear of the body offset to the driver's side of the pump panel. A 5" schedule 10 stainless steel pipe will run forward and connect the inlet to the pump inlet at the front of the body.

A 3" tank to pump line will be installed with a ¼ turn valve located at the tank and tee into the 5" pipe. A check valve will be installed between the valve and the pump with the check towards the tank.

Also a 2.5" brass manual ¼ turn valve with chrome ball handle will be installed below the 5" inlet. It will have a female NH thread with chrome plug. It will be installed on a flange welded to a tee that flows into the 5" inlet pipe. This line will allow positive water to the pump from another apparatus or hydrant.

### **DISCHARGE MANIFOLD**

An all stainless steel 304 L 3" square manifold will be supplied. The manifold will have mounting legs made of ¼" 304 L – stainless steel as well as the two ends which will be ¼" 304 – L – also. The manifold will be TIG welded and tested to 400 PSI.

All of the discharge nipples will be stainless steel and welded to the top surface. The nipples will be installed to allow sufficient room for the discharge valves. A drain valve will be installed in the bottom and piped via hose to below the frame rails.

The manifold will supply three (3) 1 ½" discharges for two (2) upper preconnects and a front trashline, one 2 ½" direct rear discharge and one (1) 1" outlet, for a hose reel. Also, an 1 ½" line will be installed for pump recirculation. All valves will be Akron Brass pull control operated.

A separate 1 ½" direct tank fill line and valve will be piped from the inlet of the pump.

### **FRONT BUMPER EXTENSION AND TRASHLINE**

The factory front bumper will be extended out and will have a diamondplate gravel cover installed to cover the gap. A diamondplate hose tray to hold 50' of 1.75" hose will be fabricated and installed centered on the bumper.

Also, a 1.5" male NH discharge will be plumbed and installed on the passenger's side of the hose tray. The discharge will be plumbed from the rear pump area with high pressure rubber hose. At low points, so the entire line will drain, spring loaded ¾" brass drains will be installed.

### **PUMP PANEL**

The pump panel will be constructed of .125" aluminum and shall be the full width of the pump compartment. The panel will be mounted behind the pump and will be powder coated black. Also controls for the valves, will be Innovative Controls remote locking linkage "T" control handles. Each control will have a lettered and colored bezel for each valve function.

The panel will hold the water level indication and main pressure gage, inlet pressure and 2.5" gages for each discharge. An Amdor 42" H2O LED pump panel light will be installed in a stainless cover mounted above pump panel.

Above the panel a custom fabricated diamondplate step that will be full width of the panel will be installed with integrated through grab holds built in. A total of 4 fold down steps will be installed on the rear wall of the body, two on either side of the pump panel. Below the pump control panel a gage panel will be installed. The panel will include:

- Five (5), 2.5" individual discharge gauges 0-400 psi
  - The two preconnect discharges will be red and orange color respectively.
  - The reel will be yellow.
  - The 2.5" discharge out the rear will be blue in color.
  - The front trashline will be white in color.
- Two (2) 3.5" Innovative Controls Master gauges and cluster



- Two (2) pull controls for tank to pump and tank fill
- One (1), Fire Research Tankvision water level gauge
- One (1), Fire Research Tankvision foam level gauge
- Two (2), test ports
- One (1), panel light switch
- One (1) Foam Pro Controller
- One (1), Fire Research Total Control pressure governor
- One (1), primer control.

### **FOAM SYSTEM**

The apparatus shall be equipped with an FRC Foam Pro 1600, electronic, fully automatic, variable speed, direct injection, and discharge side foam proportioning system. The system shall be capable of handling Class A foam concentrate. The foam proportioning operation shall be based on direct measurement of water flows, and remain consistent within the specified flows and pressures. It will be mounted in the pump panel area. Once engaged, each discharge will be capable of discharging the water/foam mixture.

A paddlewheel-type flowmeter shall be installed in the discharge system specified to be “foam capable.” A simulated flow feature shall be incorporated into the motor driver to simulate an approximate flow value of 100 gpm. This feature is to be engaged or disengaged with a momentary switch and will automatically disengage when the main system switch is turned off.

The control module shall enable the pump operator to:

Activate the foam proportioning system

Select proportioning rates from 0.1% to 1.0%

See a “low concentrate” warning light flash when the foam tank runs low. In two minutes, if foam concentrate is not added to the tank, shut the foam concentrate pump down.

A 12 volt electric motor driven positive displacement plunger pump shall be provided. The pump capacity shall be from 0.1 gpm (0.38 L/min) to 1.0 gpm (3.8 L/min) at 200 psi (13.8 BAR) with a maximum operating pressure up to 400 psi (27.6 BAR). The pump shall have the capability to draw 3 foot of lift. The system will draw a maximum of 30 amps @ 12 VDC. The motor shall be controlled by the microprocessor (mounted to the base of the pump). It shall receive signals from the control module and power the 1/3 hp (.25 Kw) electric motor in a variable speed duty cycle to ensure that the correct proportion of concentrate is injected into the water stream. A full flow check valve shall be provided in the discharge piping to prevent foam contamination of fire pump and water tank. A 12 psi (.83 BAR) opening pressure check valve shall be provided in concentrate line.

### **HOSE AREA**

There will be two (2) 1.50" preconnects, its location is inboard the driver's side compartments at the upper rear of the body and will hold a minimum of 200' of 1.75" hose.

To the right of the preconnects will be a 5.00" hosebed, 35.00" W x 16" T x 70.00" L and will hold a minimum of 4000" of 5" hose.

The beds will have a black vinyl hose bed cover with a bungee quick release retention system. Grab handles will be installed on each side of the pump panel and there will be pump panel LED lighting.

### **BOOSTER REEL**

A hose reel shall be mounted on the front side of the water tank and will be one (1) Hannay SBEF30-23-24 polished aluminum booster reel with capacity for storing 200 ft of 1" booster hose. The drum diameter shall be 12" and a special riser provided to keep the hose from kinking when charged.

The reel shall have a 12 volt electric rewind and have one rewind control momentary push button in each front compartment. There shall be two roller assemblies, one each side of the body to allow the hose to pay out properly. The rollers shall be mounted on top of the front of the compartments.

Reel supplied with 200' of American BH-800 hose with aluminum hard coat couplings and department will supply the nozzle.

### **REAR STEPS**

Four (4) fold down steps with integrated LED lighting, will be installed on the rear of the body, two on each side of the pump panel.

Also, two (2) Ziamatic 24" slide out steel steps will be installed, one (1) under each side of the rear of the body.

## **ELECTRICAL**

All 12-volt electrical equipment installed by the apparatus manufacturer shall conform to modern automotive practices. All wiring shall be high temperature crosslink type. Wiring shall be run, in loom or conduit, where exposed and have grommets where wire passes through sheet metal. Automatic reset circuit breakers shall be provided which conform to SAE Standards. Wiring shall be color, function and number coded. Function and number codes shall be continuously imprinted on all wiring harness conductors at 2.00" intervals. Exterior exposed wire connectors shall be positive locking, and environmentally sealed to withstand elements such as temperature extremes, moisture and automotive fluids. Electrical wiring and equipment shall be installed utilizing the following guidelines:

(1) All holes made in the roof shall be caulked with silicon. Rope caulk is not acceptable. Large fender washers, liberally caulked, shall be used when fastening equipment to the underside of the cab roof.

(2) Any electrical component that is installed in an exposed area shall be mounted in a manner that shall not allow moisture to accumulate in it. Exposed area shall be defined as any location outside of the cab or body.

(3) Electrical components designed to be removed for maintenance shall not be fastened with nuts and bolts. Metal screws shall be used in mounting these devices. Also a coil of wire shall be provided behind the appliance to allow them to be pulled away from mounting area for inspection and service work.

(4) Corrosion preventative compound shall be applied to all terminal plugs located outside of the cab or body. All non-waterproof connections shall require this compound in the plug to prevent corrosion and for easy separation (of the plug).

(5) All lights that have their sockets in a weather exposed area shall have corrosion preventative compound added to the socket terminal area.

(6) All electrical terminals in exposed areas shall have ECK™ corrosion preventative applied completely over the metal portion of the terminal. All emergency light switches shall be mounted on a separate panel installed in the cab. A master warning light switch and individual switches shall be provided to allow preselection of emergency lights. The light switches shall be "rocker" type with an internal indicator light to show when switch is energized. All switches shall be properly identified and mounted in a removable panel for ease in servicing.

Identification of the switches shall be done by either printing or etching on the switch panel. The switches and identification shall be illuminated.

All lights and reflectors, required to comply with Federal Motor Vehicle Safety Standard #108, shall be furnished. Rear identification lights shall be recessed mounted for protection.

### **WIRING CENTER**

An all Aluminum #3003 alloy console will be manufactured and powder coated black. The console will hold all band radios and a Whelen Core CenCom siren and lighting control head in the front portion. The console will be permanently installed between the two front bucket seats.

The rear section of the console will have a removable top & side door for access to all 12v electric equipment, wiring & controls for the entire fire body & equipment. The flat top of the console at the rear will have room for department supplied handlights and/or portable radios. Layout will be determined at preconstruction conference.

### **Lighting**

Roof light – A Whelen Liberty II LED light bar will be installed on the cab roof with red and clear lenses with two take down lights in the front and two alley lights one on each side. An infrared Opticom will be included. All bulbs will be LED.

Grill lights– Whelen grill lights will be provided. The lights will be M6 Red with a clear lens Super LED, mounted recessed on the push bumper center grill.

Side lights - . Two lights will be Whelen M6 series red super LED clear lens, mounted inset of the front bumper side area in chrome housings facing out.

Two lights will also be Whelen M6 series red super LED clear lens, mounted on the body above the wheel well on both sides of the body.

Rear lights – On the rear compartment walls will be mounted four Whelen M6 series red super LED with clear lens lights.

On the bottom of the rear body will be a triple cluster rectangular brake, tail, and directional lights will be mounted vertically on the rear of the body. The lights will be three Whelen M6 series mounted in their own polished aluminum for protection.

A third brake light will be installed at the top center of the pump panel. The light will be a Whelen M6 brake light.

A back up alarm will be provided and installed.

### **REAR ID/MARKER DOT LIGHTING**

There will be one (1) three (3) LED light kit used as identification lights located at the rear of the apparatus per the following:

- As close as practical to the vertical Centerline.
- Centers spaced not less than six (6) inches or more than twelve (12) inches apart.
- Red in color.
- All at the same height.

There will be two (2) LED lights installed at the rear of the apparatus used as clearance lights located at the rear of the apparatus per the following:

- To indicate the overall width of the vehicle.
- One (1) each side of the vertical centerline.
- As near the top as practical.
- Red in color.
- To be visible from the rear.

There will be two (2) LED lights installed on the side of the apparatus as close to the rear as practical per the following:

- To indicate the overall length of the vehicle.
- One (1) each side of the vertical centerline.
- As near the top as practical.
- Red in color.
- To be visible from the side.

### **SIDE STEP LIGHTING**

Four (4) TecNiq E10 LED lights with angled stainless steel mounts, will be installed under the cab steps, one under each door.

Lights will be installed on both sides of the cab and come on when the vehicle is put into park.

### **REAR STEP LIGHTING**

Two Whelen model 0AC0EDCR LED lights with a 45 degree bezel, will be installed on the rear wall angled onto the rear step.

### **UNDERBODY LIGHTING**

A total of six (6) TecNiq E10 LED lights with angled stainless steel mounts, will be installed under the body. One will be under each roll up door in front of the rear tires on each side and one behind the rear tires on each side.

Also two (2) will be installed under the front of the body and come on when the vehicle is put into park.

### **FRONT SCENE LIGHTS**

Two (2) FRC 12 volt LED Spectrum MS telescoping scene lights will be installed on the front of the body, one (1) per side. A light switch for each light on the Core controller will turn the lights on/off.

### **REAR SCENE LIGHTS**

Two Whelen 12 volt LED PCPSM1C scene lights will be installed on the rear of the body, inboard of the top warning lights. The lights will automatically come on when the truck is placed in reverse. Also a light switch on the Core controller will turn both lights on/off.

### **SIREN / SPEAKER**

A Whelen SA315P Speaker /Siren will be installed behind the truck grill.

### **SHORE LINE**

One (1) 110 volt Kussmaul 1200 on board charger with auto eject receptacle shall be installed on the left side of the body in the front wheel well area.

### **BACK UP CAMERA**

A Zone Defense backup camera with 7" color screen will be installed between the visors in the cab and wired to automatically come on when the truck is placed in reverse. Also rear proximity warning sensors which are displayed on the 7" screen will be mounted.

### **CHASSIS PAINT**

The chassis will be ordered **Dodge Flame Red** and will be repainted to the customer Pierce Dark Red #100 with the department signing off on the red color before chassis is painted.



## **BODY PAINT COLOR TO MATCH THE RED OF THE CHASSIS**

**The exterior custom body painting procedure will consist of a seven (7) step finishing process as follows:**

1. Manual Surface Preparation - All exposed metal surfaces on the custom body will be thoroughly cleaned and prepared for painting. Surfaces that will not be painted include all chrome plated, polished stainless steel, anodized aluminum and bright aluminum treadplate. Each imperfection on the exterior metal surface will be removed or filled and then sanded smooth for a smooth appearance. All seams will be sealed before painting.
2. Chemical Cleaning and Treatment - The aluminum surfaces will be properly cleaned using a 4-phase, high pressure and high temperature acid etching system. All steel surfaces will be properly treated using a 3-phase, high temperature, cleaning/phosphatizing system. Surfaces are chemically cleaned to remove all dirt, oil, grease and metal oxides to ensure the subsequent coatings bond well. An ultra pure water final rinse of 25 parts per million solids or less, will be applied to final rinse all metal surfaces at the conclusion of the metal treatment process. This final rinse ensures all chemical residues are removed and that no minerals, (salts), from the water dry onto the metal surface and remain under the primers and topcoats. These salts can lead to blistering and under film corrosion.
3. Primer/Surfacer Coats - A minimum of two (2) mil dry, (.002), of two component urethane primer/surfacer will be hand applied to the chemically treated metal surfaces to provide a strong corrosion protective base coat and to smooth out the surface. The primer is a high solids and low VOC paint.
4. Hand Sanding to Ultra Fine Finish The primer/surfacer coat is lightly sanded with mild abrasive paper to an ultra smooth finish. This hand finish process is critical to produce the smooth mirror like finish in the topcoat.
5. Sealer Primer Coat A two- (2) component sealer primer coat is applied over the sanded primer to again build toward the final smooth finish. This layer of primer sealer also gives additional corrosion protection.
6. Topcoat Paint Two (2) coats of an automotive grade, two component acrylic urethane paint are applied to provide the lasting beauty and durability. The acrylic urethane topcoat contains a clear coat resin chemistry that creates the high gloss and depth of image. This type of topcoat provides the best resistance against acid rain and other more common chemicals.
7. Clearcoat - Two (2) coats of an automotive grade two (2) component urethane will be applied. Lap style doors will be clear coated to match the body. Roll-up doors will not be clear coated and the standard roll-up door warranty will apply.



Each batch of color topcoat, together with the finish painted vehicle, is tested for precise color match. Visual color match will be checked following ASTM D-1729, (American Standard Testing Methods), procedures using CIE, (International Commission on Illumination), D75 Northern Daylight light source. Instrumental color match will follow ASMT D-2244 procedures with a maximum delta E of 1.0 for whites, 1.4 for yellows, blues, greens and 1.5 for reds.

All removable items such as brackets, compartment doors, door hinges, trim, etc. will be removed and painted separately to insure paint behind all mounted items. Body assemblies that cannot be finish painted after assembly will be finish painted before assembly.

### **PAINT - ENVIRONMENTAL IMPACT**

Contractor will meet or exceed all current State (his) regulations concerning paint operations. Pollution control will include measures to protect the atmosphere, water and soil. Controls will include the following conditions:

- Topcoats and primers will be chrome and lead free.
- Metal treatment chemicals will be chrome free. The wastewater generated in the metal treatment process will be treated on-site to remove any other heavy metals.
- Particulate emission collection from sanding operations must have a 99.99% efficiency factor.
- Particulate emissions from painting operations will be collected by a dry filter or water wash process. If the dry filter means is used, it must have an efficiency rating of 98.00%. Water wash systems will be 99.97% efficient.
- Water from water wash booths will be reused. Solids will be removed mechanically on a continual basis to keep the water clean.
- Paint wastes are disposed of in an environmentally safe manner. They are used as fuel in kilns used in the cement manufacturing process - thereby extracting energy from a waste material.
- Empty metal paint containers will be cleaned, crushed and recycled to recover the metal.
- Solvents used in clean-up operations will be collected, recycled on-site, or sent off-site for distillation and returned for reuse. Residue from the distillation operation will be used as fuel in off-site cement kilns.

## **GRAPHICS**

### **REAR CHEVRON STRIPING**

There shall be alternating chevron striping located on the rear facing vertical surface of the apparatus.

Each stripe shall be 6.00" in width. The colors shall be Solid Red Diamond Grade and Solid Yellow Diamond 3M striping.

### **REFLECTIVE BAND**

A 1"-4"-1" reflective black scotchlite band shall be provided along the side of the vehicle and along the sides of the body.

### **GOLD LEAF LETTERING-STRIPING AND GRAPHICS**

A complete graphics package consisting of EZ gold leaf lettering striping and emblems will be supplied to match existing Fire Department equipment.

## **END SPECIFICATIONS**



---

---

# STAFF REPORT

NO. 22-03

---

**TO:** BOARD OF DIRECTORS  
DAVE MCQUEAD, FIRE CHIEF

**FROM:** BRUCE SHERWOOD, BATTALION CHIEF

**SUBJECT:** SALE OF SURPLUS PROPERTY

**DATE:** APRIL 8, 2022

---



## RECOMMENDATION

Staff recommends that vehicle # 0461 is deemed surplus and be sold to Fire Etc. for cash based on their offer of \$27,900.00.

## BACKGROUND

The vehicle was acquired from the Elfin Forest Fire Department as part of the realignment process.

## CURRENT SITUATION

The district currently owns two (2) Type III apparatus, with their location being, Station 1 and Station 5. We have also taken possession of an OES Type III giving us three (3) Type III brush engines in the district. With the three (3) Type III engines located at stations and cross-staffed with personnel, we feel we are providing the proper coverage for the district. This engine is eighteen (18) years old and is no longer viable as a fleet vehicle due to age, design, and mechanical problems.

The District no longer needs this vehicle and staff is prepared to send this vehicle to Fire Etc. for their cash offer.